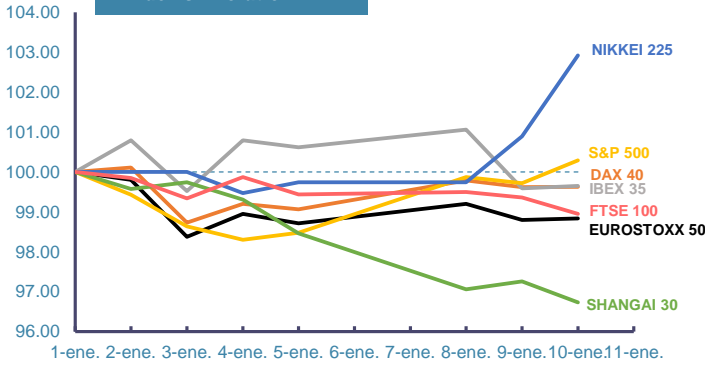
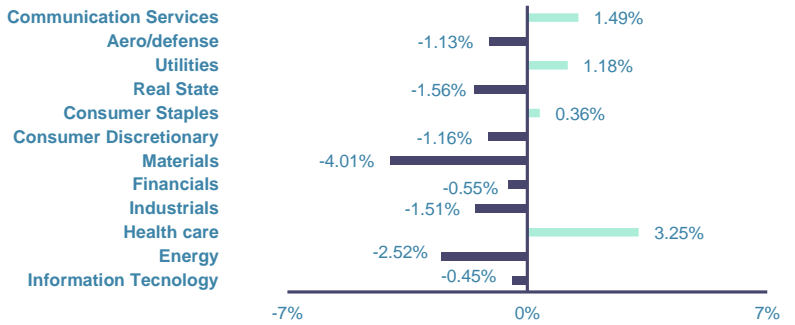


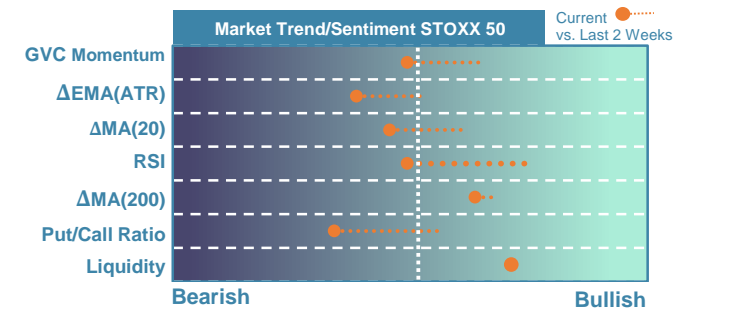
Index's Evolution YTD



MSCI World Sector Evolution YTD

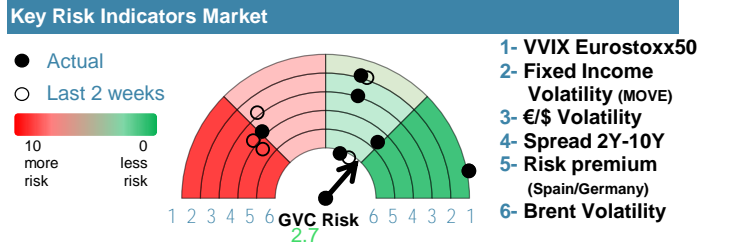


EUROPE

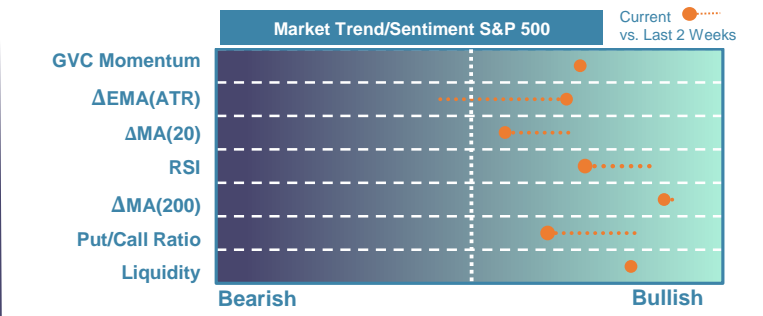


Market Index	Last	Daily Var. 22:00 PM	Future 8:36 AM	Yearly Var.
DJ Eurostoxx 50	16,689.81	0.01%	0.78%	-0.37%
DAX 40	7,426.08	-0.01%	0.64%	-1.55%
CAC 40	7,651.76	-0.42%	0.72%	-1.05%
FTSE 100	10,067.10	0.07%	0.50%	-0.35%
IBEX 35	37,695.73	0.45%	0.50%	0.02%

Fixed Income	Last	Daily Var.	Bip Var.	Yearly Var.
Bond Spain 10Y	3.18	0.47%	1.50	5.93%
Bond Germany 10Y	2.21	1.10%	2.40	9.07%
Bond U.K. 10Y	3.82	1.08%	4.10	8.03%
H.Yield ICE BofA	6.39	1.90%	-	3.21%

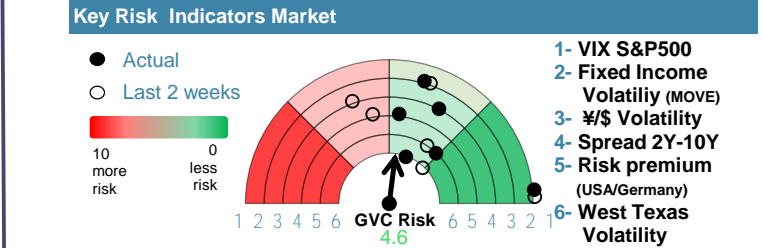


EEUU & ASIA



Market Index	Last	Daily Var. 22:00 PM	Future 8:36 AM	Yearly Var.
DJ Industrial	37,695.73	0.45%	0.23%	0.02%
S&P 500	4,783.45	0.57%	0.26%	0.29%
Nasdaq 100	16,793.05	0.69%	0.40%	-0.20%
Nikkei 225	34,441.72	2.01%	0.00%	2.92%
Shanghai 30	2,877.70	-0.54%	1.40%	-3.27%

Fixed Income	Last	Daily Var.	Bip Var.	Yearly Var.
Bond EEUU 10Y	4.04	0.66%	2.64	4.54%
Bond Japan 10Y	0.58	-0.68%	-0.40	-6.56%
Bond China 10Y	2.54	0.12%	0.30	-1.40%
H.Yield ICE BofA	7.61	1.09%	-	4.11%



Commodities	Last	Daily Var.	Yearly Var.
Brent Oil	76.80	-1.02%	-0.31%
Gold	2,026.15	-0.06%	-1.90%
CRB Index	300.21	-0.88%	-0.40%
Copper (USD/LBS)	3.78	0.60%	-2.81%

Currency	Last	Daily Var.	Yearly Var.
€/\$	1.10	0.38%	-0.58%
¥/\$	145.72	0.88%	3.36%
£/€	0.86	0.20%	-0.63%
B/\$	46,570.76	1.08%	10.86%

Region/ Event	Relevance	Period	Previous	Forecast	Actual	Impact
Industrial Output (Y.Y)	☆☆☆	Nov 2023	-1.50%	-	-	-
CPI (f.) (Y.Y)	☆☆☆☆	Dec 2023	3.10%	3.24%	-	-
Industrial Output (Y.Y)	☆☆☆	Nov 2023	-1.10%	-	-	-
Core CPI (Y.Y)	☆☆☆☆	Dec 2023	4%	3.86%	-	-
Initial Jobless	☆☆☆☆	W 06 Jan	202.000	209.900	-	-