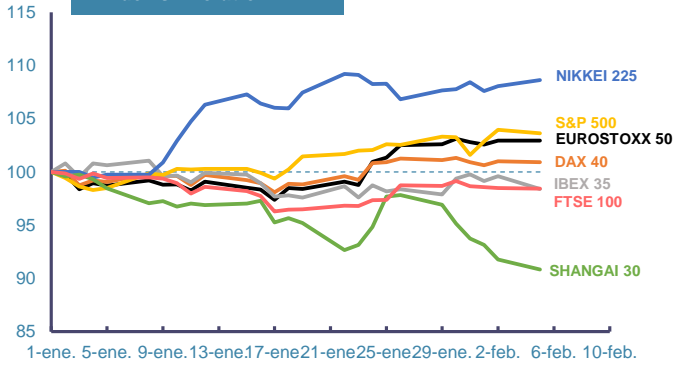
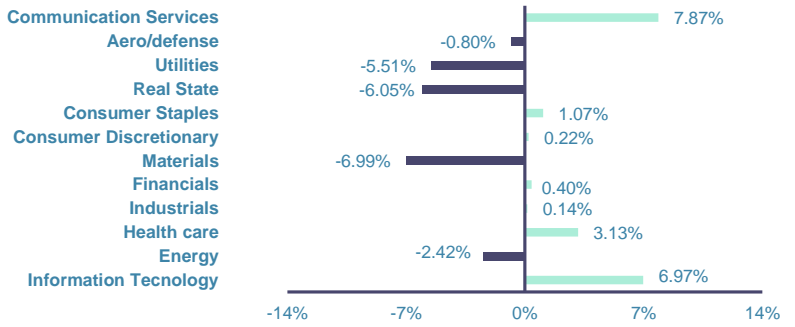


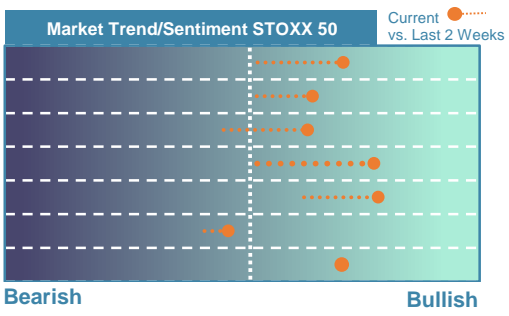
Index's Evolution YTD



MSCI World Sector Evolution YTD

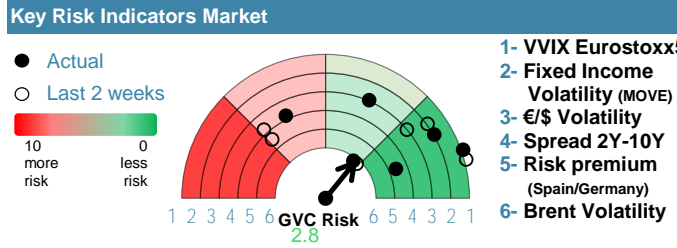


EUROPE



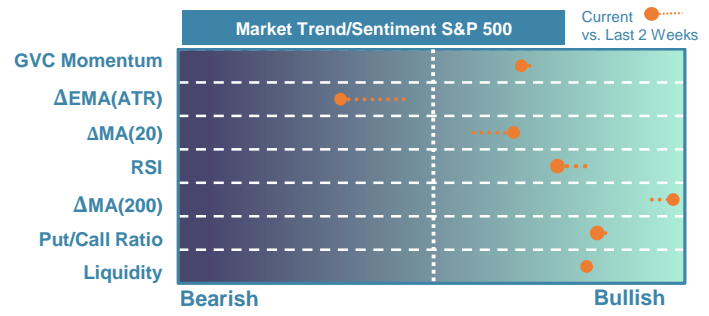
Market Index	Last	Daily Var. 22:00 PM	Future 8:35 AM	Yearly Var.
DJ Eurostoxx 50	4,655.27	0.02%	0.66%	2.96%
DAX 40	16,904.06	-0.08%	0.43%	0.91%
CAC 40	7,589.96	-0.03%	0.49%	0.62%
FTSE 100	7,612.86	-0.04%	0.68%	-1.56%
IBEX 35	9,941.30	-1.20%	0.52%	-1.59%

Fixed Income	Last	Daily Var.	Bip Var.	Yearly Var.
Bond Spain 10Y	3.24	2.56%	8.10	8.00%
Bond Germany 10Y	2.32	4.26%	9.50	14.54%
Bond U.K. 10Y	4.01	2.22%	8.70	13.25%
H.Yield ICE BofA	6.39	-0.92%	-	-0.11%



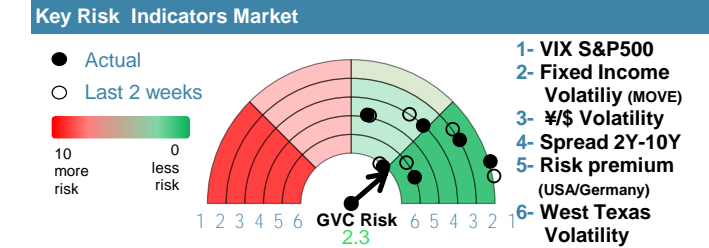
Commodities	Last	Daily Var.	Yearly Var.
Brent Oil	77.99	0.85%	1.23%
Gold	2,019.55	-0.78%	-2.22%
CRB Index	308.10	0.21%	2.22%
Copper (USD/LBS)	3.79	-1.25%	-2.63%

EEUU & ASIA



Market Index	Last	Daily Var. 22:00 PM	Future 8:35 AM	Yearly Var.
DJ Industrial	38,380.12	-0.71%	0.03%	1.83%
S&P 500	4,942.81	-0.32%	0.16%	3.63%
Nasdaq 100	17,613.04	-0.17%	0.33%	4.68%
Nikkei 225	36,354.16	0.54%	0.00%	8.64%
Shanghai 30	2,702.19	-1.02%	4.66%	-9.17%

Fixed Income	Last	Daily Var.	Bip Var.	Yearly Var.
Bond EEUU 10Y	4.16	3.33%	13.42	7.65%
Bond Japan 10Y	0.71	9.68%	6.30	14.24%
Bond China 10Y	2.40	-1.31%	-3.20	-6.82%
H.Yield ICE BofA	7.73	-1.75%	-	2.75%



Currency	Last	Daily Var.	Yearly Var.
€/€	1.07	-0.40%	-2.66%
¥/\$	148.65	0.23%	5.44%
£/€	0.86	0.37%	-1.15%
B/\$	42,648.59	-1.14%	1.52%

Region/ Event	Relevance	Period	Previous	Forecast	Actual	Impact
Industrial Orders (M.M)	★★★★	Dec 2023	0.30%	0.07%	8.90%	High
Retail Sales (M.M)	★★★	Dec 2023	-0.30%	-1.09%	-	-
S&P Global Cons PMI	★★★	Jan 2024	46.8	47.28	-	-
Consumer Confidence	★★★	Jan 2024	106.7	-	-	-
Retail Sales (Y.Y)	★★★	Dec 2023	-1.10%	-0.99%	-	-
Retail Sales (Y.Y)	★	Jan 2024	1.90%	-	1.40%	Low