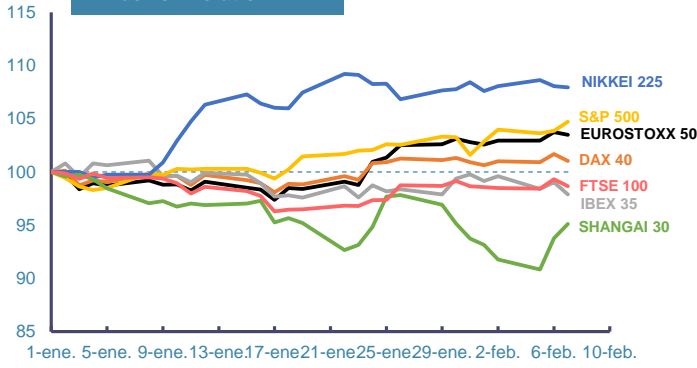
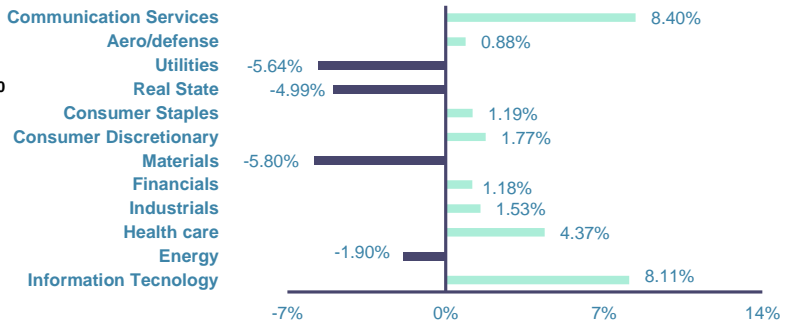


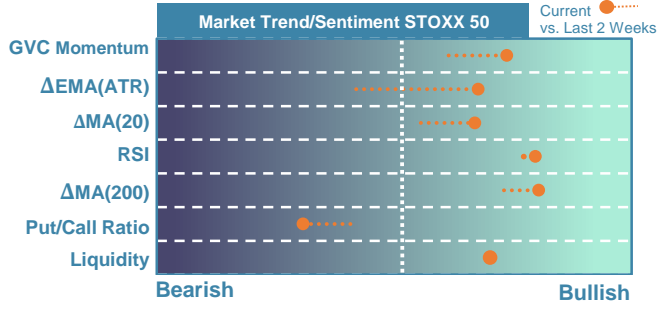
### Index's Evolution YTD



### MSCI World Sector Evolution YTD



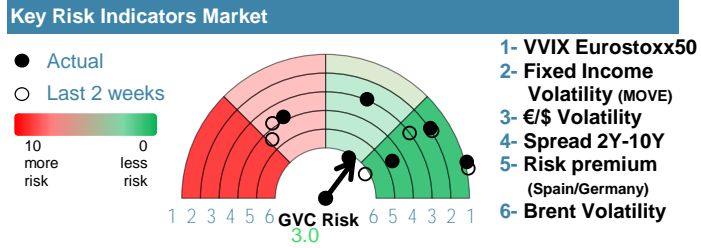
## EUROPE



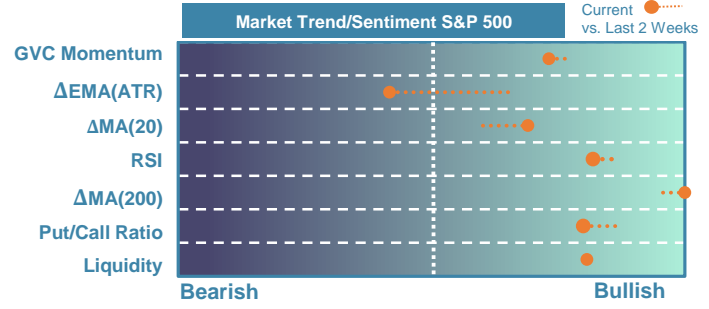
Market Index	Last	Daily Var. 22:00 PM	Future 8:27 AM	Yearly Var.
DJ Eurostoxx 50	4,678.85	-0.26%	0.38%	3.48%
DAX 40	16,921.96	-0.65%	0.29%	1.02%
CAC 40	7,611.26	-0.36%	0.20%	0.90%
FTSE 100	7,628.75	-0.68%	0.07%	-1.35%
IBEX 35	9,888.20	-1.15%	0.24%	-2.12%

Fixed Income	Last	Daily Var.	Bip Var.	Yearly Var.
Bond Spain 10Y	3.23	0.40%	1.30	7.67%
Bond Germany 10Y	2.30	0.13%	0.30	13.41%
Bond U.K. 10Y	3.99	0.96%	3.80	12.74%
H.Yield ICE BofA	6.39	0.00%	-	1.05%



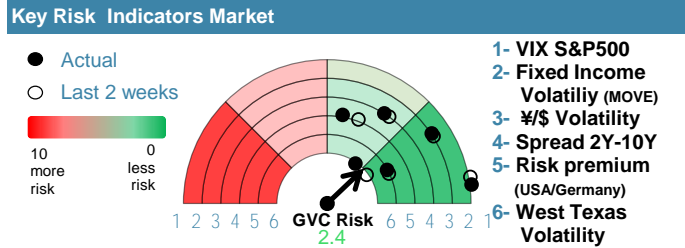
## EEUU & ASIA



Market Index	Last	Daily Var. 22:00 PM	Future 8:27 AM	Yearly Var.
DJ Industrial	38,677.36	0.40%	0.04%	2.62%
S&P 500	4,995.06	0.82%	0.00%	4.72%
Nasdaq 100	17,755.07	1.04%	0.10%	5.52%
Nikkei 225	36,119.92	-0.11%	0.00%	7.94%
Shanghai 30	2,829.70	1.44%	-0.83%	-4.88%

Fixed Income	Last	Daily Var.	Bip Var.	Yearly Var.
Bond EEUU 10Y	4.12	0.56%	2.30	6.45%
Bond Japan 10Y	0.72	-1.52%	-1.10	14.40%
Bond China 10Y	2.45	-0.61%	-1.50	-5.12%
H.Yield ICE BofA	7.61	0.81%	-	3.80%



Commodities	Last	Daily Var.	Yearly Var.
Brent Oil	79.21	0.79%	2.82%
Gold	2,040.90	0.21%	-1.19%
CRB Index	310.67	0.50%	3.08%
Copper (USD/LBS)	3.75	-1.21%	-3.60%

Currency	Last	Daily Var.	Yearly Var.
€/\$	1.08	0.17%	-2.39%
¥/\$	148.09	0.18%	5.04%
£/€	0.85	-0.30%	-1.72%
B/\$	44,250.05	2.62%	5.33%

Region/ Event	Relevance	Period	Previous	Forecast	Actual	Impact
Initial Jobless	★★★★★	W 03 Feb	224.000	221.200	-	-
Wholesale Sales MM	★★★	Dec 2023	0%	0.27%	-	-
PPI (Y.Y)	★★★★★	Jan 2024	-2.70%	-2.59%	-2.50%	Low
CPI (Y.Y)	★★★★★	Jan 2024	-0.30%	-0.53%	-0.80%	Low