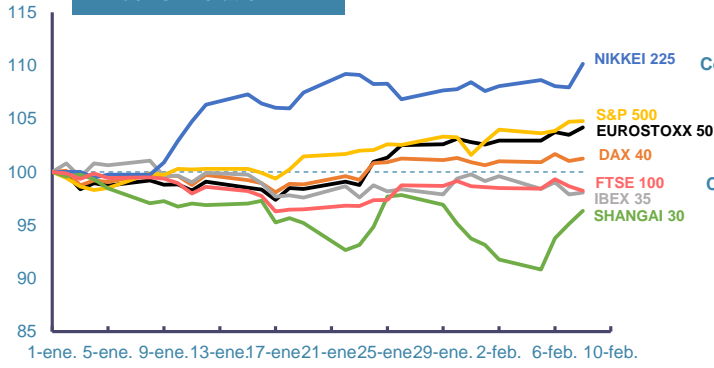
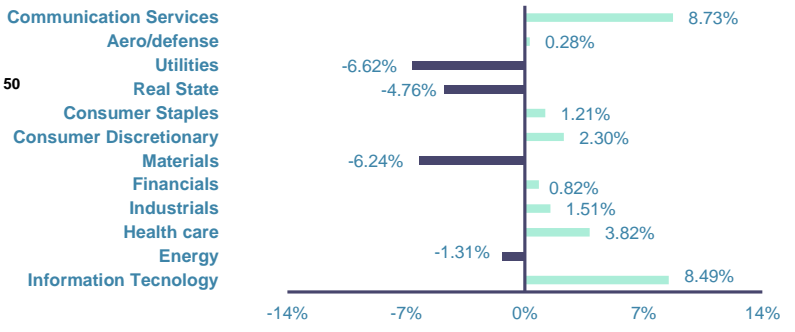


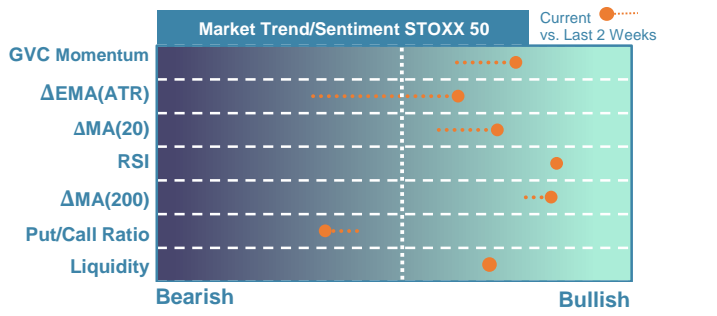
Index's Evolution YTD



MSCI World Sector Evolution YTD

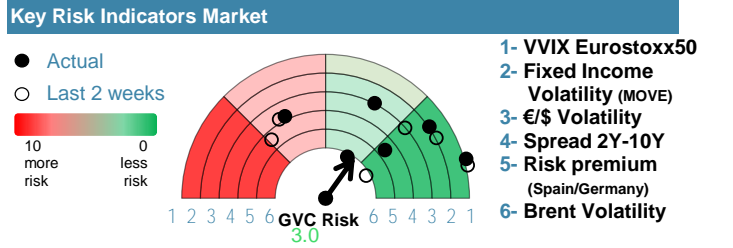


EUROPE

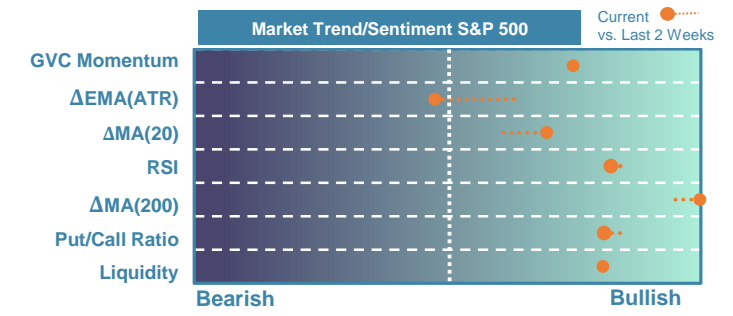


Market Index	Last	Daily Var. 22:00 PM	Future 8:37 AM	Yearly Var.
DJ Eurostoxx 50	4,710.78	0.68%	0.04%	4.18%
DAX 40	16,963.83	0.25%	0.00%	1.27%
CAC 40	7,665.63	0.71%	-0.14%	1.62%
FTSE 100	7,595.48	-0.44%	0.09%	-1.78%
IBEX 35	9,905.40	0.17%	-0.08%	-1.95%

Fixed Income	Last	Daily Var.	Bip Var.	Yearly Var.
Bond Spain 10Y	3.30	2.29%	7.40	10.13%
Bond Germany 10Y	2.36	2.39%	5.50	16.12%
Bond U.K. 10Y	4.06	1.63%	6.50	14.58%
H.Yield ICE BofA	6.39	0.03%	-	1.05%

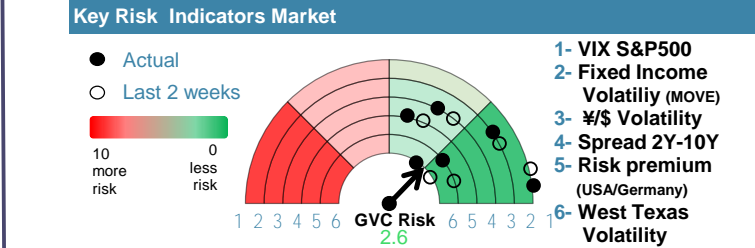


EEUU & ASIA



Market Index	Last	Daily Var. 22:00 PM	Future 8:37 AM	Yearly Var.
DJ Industrial	38,726.33	0.13%	-0.08%	2.75%
S&P 500	4,997.91	0.06%	-0.02%	4.78%
Nasdaq 100	17,783.17	0.16%	0.08%	5.69%
Nikkei 225	36,863.28	2.06%	0.00%	10.16%
Shanghai 30	2,865.90	1.28%	-1.16%	-3.67%

Fixed Income	Last	Daily Var.	Bip Var.	Yearly Var.
Bond EEUU 10Y	4.16	0.99%	4.07	7.50%
Bond Japan 10Y	0.70	-1.54%	-1.10	12.64%
Bond China 10Y	2.45	-0.08%	-0.20	-5.20%
H.Yield ICE BofA	7.60	0.05%	-	2.96%



Commodities	Last	Daily Var.	Yearly Var.
Brent Oil	81.63	3.06%	5.96%
Gold	2,030.71	-0.50%	-1.68%
CRB Index	314.42	1.21%	4.32%
Copper (USD/LBS)	3.71	-0.96%	-4.52%

Currency	Last	Daily Var.	Yearly Var.
€/\$	1.08	0.05%	-2.35%
¥/\$	149.26	0.79%	5.87%
£/€	0.85	0.25%	-1.48%
B/\$	45,338.13	2.46%	7.92%

Region/ Event	Relevance	Period	Previous	Forecast	Actual	Impact
CPI Final (Y.Y)	★★★★	Jan 2024	2.90%	2.90%	2.90%	Neutral
HICP Final (Y.Y)	★★★★	Jan 2024	3.10%	3.10%	3.10%	Neutral
Industrial Output (Y.Y)	★★★	Dec 2023	-3.10%	-	-	-