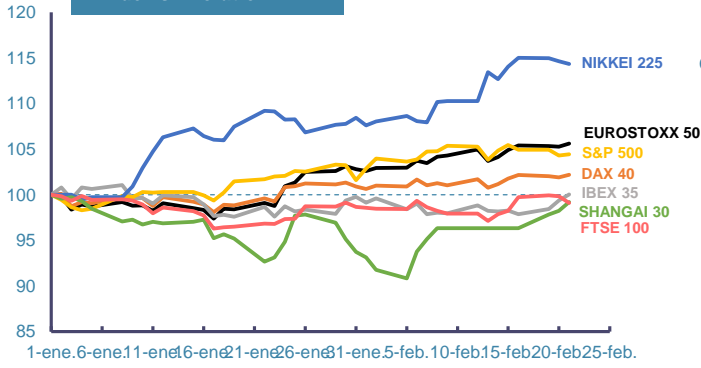
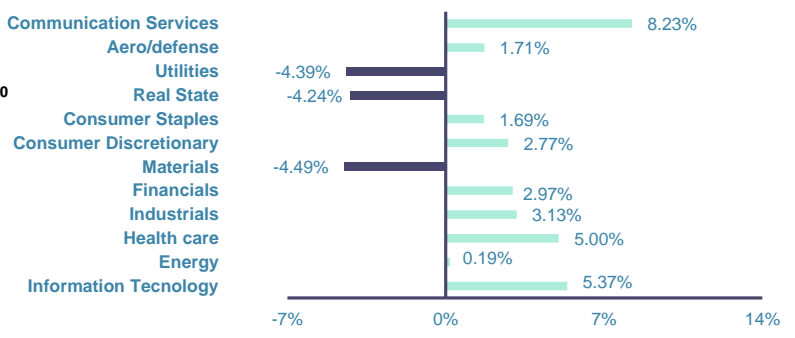


Index's Evolution YTD



MSCI World Sector Evolution YTD

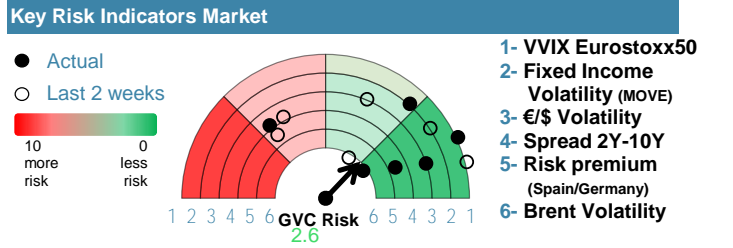


EUROPE



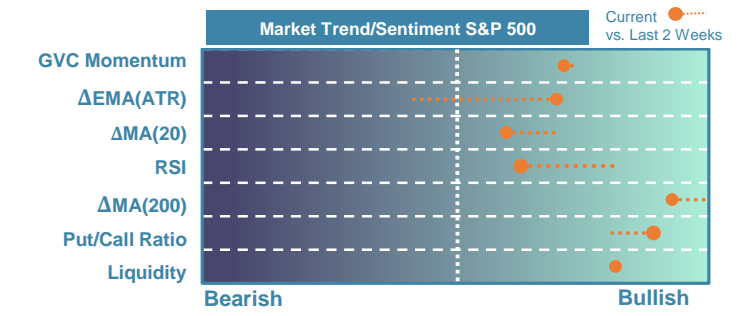
Market Index	Last	Daily Var. 22:00 PM	Future 8:30 AM	Yearly Var.
DJ Eurostoxx 50	4,775.31	0.32%	0.81%	5.61%
DAX 40	17,118.12	0.29%	0.62%	2.19%
CAC 40	7,812.09	0.22%	0.50%	3.56%
FTSE 100	7,662.51	-0.73%	0.37%	-0.91%
IBEX 35	10,107.20	0.69%	0.60%	0.05%

Fixed Income	Last	Daily Var.	Bip Var.	Yearly Var.
Bond Spain 10Y	3.36	2.35%	7.70	11.93%
Bond Germany 10Y	2.44	2.95%	7.00	20.26%
Bond U.K. 10Y	4.11	1.63%	6.60	16.11%
H.Yield ICE BofA	6.39	-0.14%	-	-0.81%



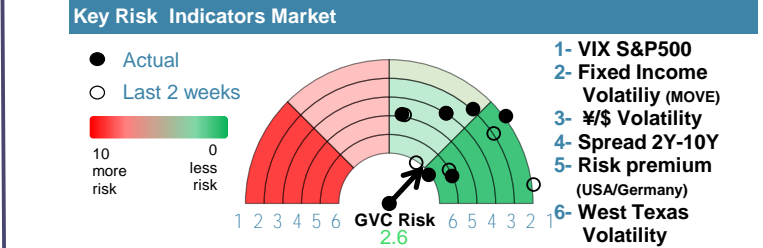
Commodities	Last	Daily Var.	Yearly Var.
Brent Oil	83.03	0.84%	7.78%
Gold	2,024.55	-0.10%	-1.98%
CRB Index	315.52	1.21%	4.68%
Copper (USD/LBS)	3.88	0.27%	-0.26%

EEUU & ASIA



Market Index	Last	Daily Var. 22:00 PM	Future 8:30 AM	Yearly Var.
DJ Industrial	38,612.24	0.13%	0.21%	2.45%
S&P 500	4,981.80	0.13%	0.85%	4.44%
Nasdaq 100	17,478.91	-0.38%	1.58%	3.88%
Nikkei 225	38,262.16	-0.26%	0.00%	14.34%
Shanghai 30	2,950.96	0.97%	1.58%	-0.81%

Fixed Income	Last	Daily Var.	Bip Var.	Yearly Var.
Bond EEUU 10Y	4.32	1.15%	4.93	11.76%
Bond Japan 10Y	0.72	-0.96%	-0.70	15.36%
Bond China 10Y	2.42	-0.70%	-1.70	-6.17%
H.Yield ICE BofA	7.73	-0.25%	-	4.37%



Currency	Last	Daily Var.	Yearly Var.
€/€	1.08	0.13%	-1.98%
¥/\$	150.36	0.28%	6.65%
£/€	0.86	0.22%	-1.14%
B/\$	51,695.43	-1.02%	23.06%

Region/ Event	Relevance	Period	Previous	Forecast	Actual	Impact
HICP Final (Y.Y)	★★★★	Jan 2024	2.80%	2.80%	-	-
S&P Global Comp. PMI	★★★★	Feb 2024	47.9	48.36	-	-
Initial Jobless	★★★★	W 17 Feb	212K	215.3K	-	-
Existing Home Sales	★★★★	Jan 2024	3.78	3.968	-	-
S&P Global Mfg. PMI	★★★★	Feb 2024	50.7	50.51	-	-
S&P Global Svcs. PMI	★★★★	Feb 2024	52.5	52.48	-	-
Composite PMI	★★★★	Feb 2024	47	47.57	-	-
Composite PMI	★★★★	Feb 2024	52.9	53	-	-
Composite PMI	★★★★	Feb 2024	44.6	44.96	-	-