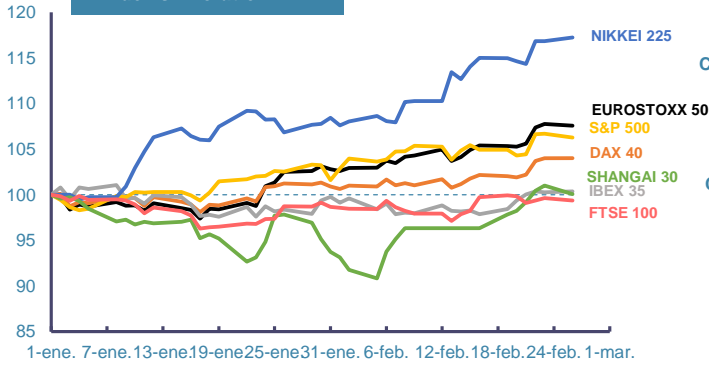
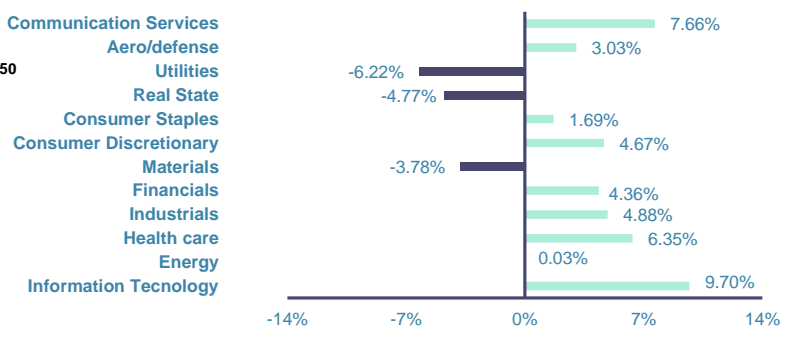


Index's Evolution YTD



MSCI World Sector Evolution YTD

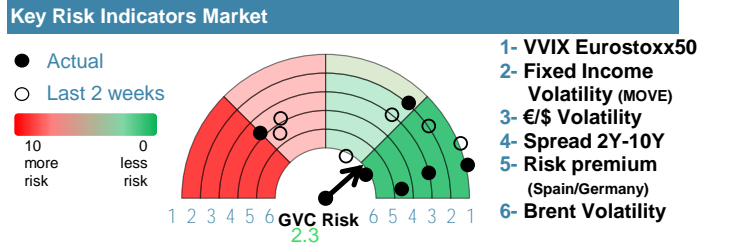


EUROPE

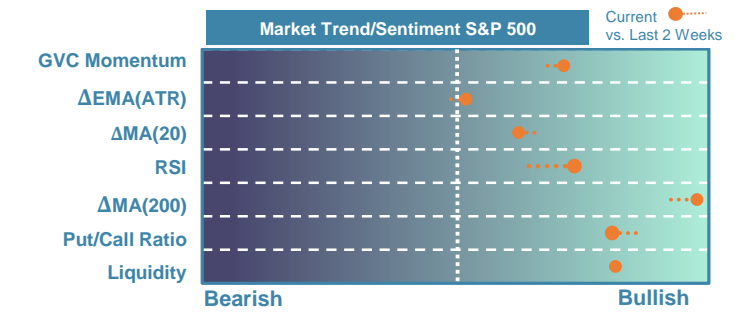


Market Index	Last	Daily Var. 22:00 PM	Future 8:37 AM	Yearly Var.
DJ Eurostoxx 50	4,864.29	-0.17%	-0.08%	7.58%
DAX 40	17,423.23	0.02%	-0.09%	4.01%
CAC 40	7,929.82	-0.46%	-0.18%	5.13%
FTSE 100	7,684.30	-0.29%	-0.14%	-0.63%
IBEX 35	10,138.40	0.08%	-0.23%	0.36%

Fixed Income	Last	Daily Var.	Bip Var.	Yearly Var.
Bond Spain 10Y	3.32	2.12%	6.90	10.67%
Bond Germany 10Y	2.43	2.88%	6.80	19.76%
Bond U.K. 10Y	4.16	3.10%	12.50	17.63%
H.Yield ICE BofA	6.39	0.02%	-	-1.90%

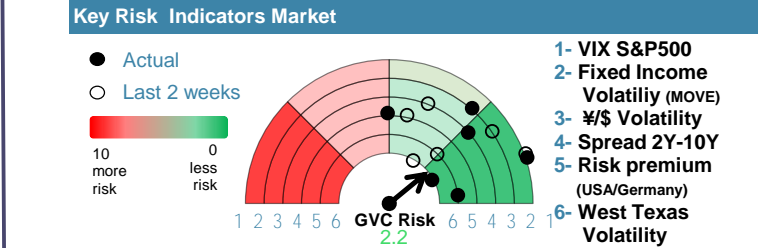


EEUU & ASIA



Market Index	Last	Daily Var. 22:00 PM	Future 8:37 AM	Yearly Var.
DJ Industrial	39,069.23	-0.16%	0.02%	3.66%
S&P 500	5,069.53	-0.38%	0.00%	6.28%
Nasdaq 100	17,933.33	-0.02%	-0.06%	6.58%
Nikkei 225	39,233.71	0.35%	0.00%	17.24%
Shanghai 30	2,977.02	-0.93%	1.17%	0.07%

Fixed Income	Last	Daily Var.	Bip Var.	Yearly Var.
Bond EEUU 10Y	4.26	0.00%	0.00	10.08%
Bond Japan 10Y	0.69	-3.77%	-2.70	10.24%
Bond China 10Y	2.38	-0.71%	-1.70	-7.56%
H.Yield ICE BofA	7.63	-0.37%	-	2.94%



Commodities	Last	Daily Var.	Yearly Var.
Brent Oil	82.53	1.11%	7.13%
Gold	2,027.45	-0.29%	-1.84%
CRB Index	315.32	1.08%	4.62%
Copper (USD/LBS)	3.83	-1.68%	-1.67%

Currency	Last	Daily Var.	Yearly Var.
€/€	1.08	0.27%	-1.70%
¥/\$	150.55	0.04%	6.79%
£/€	0.86	0.23%	-1.28%
B/\$	54,512.07	7.19%	29.76%

Region/ Event	Relevance	Period	Previous	Forecast	Actual	Impact
Consumer Sentiment	★★★	Mar 2024	-29.7	-29.22	-29	Low
Durable Goods	★★★★	Jan 2024	0%	-4.91%	-	-
Consumer Confidence	★★★★	Feb 2024	114.8	114.99	-	-
CaseShiller 20 (M.M)	★★★	Dec 2023	0.10%	0.19%	-	-
Consumer Confidence	★★★	Feb 2024	91	91.9	-	-