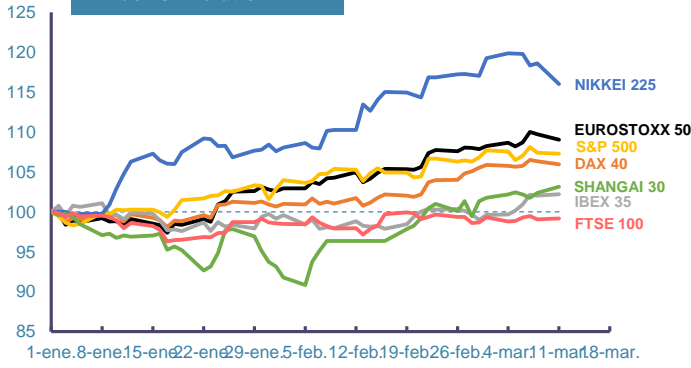
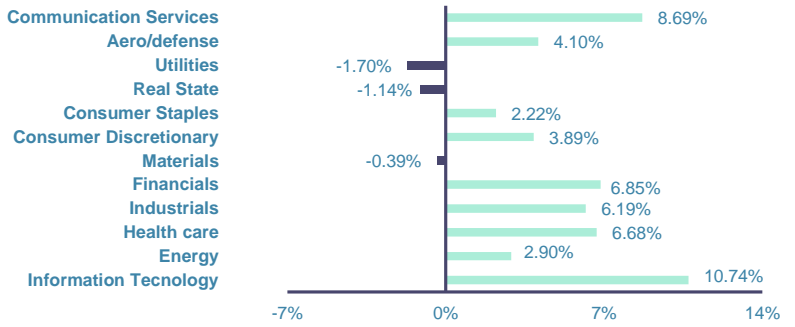


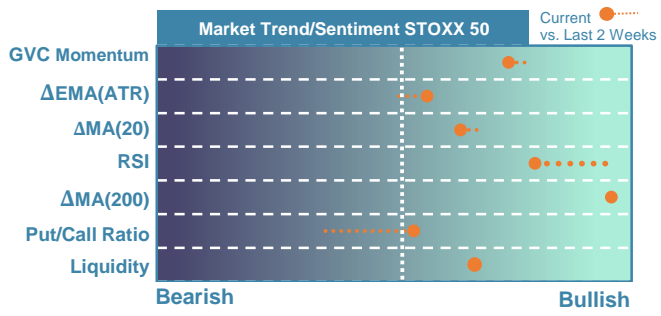
Index's Evolution YTD



MSCI World Sector Evolution YTD

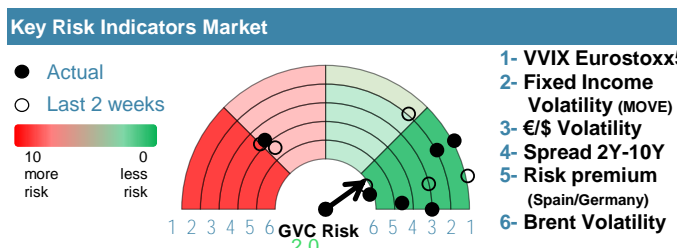


EUROPE

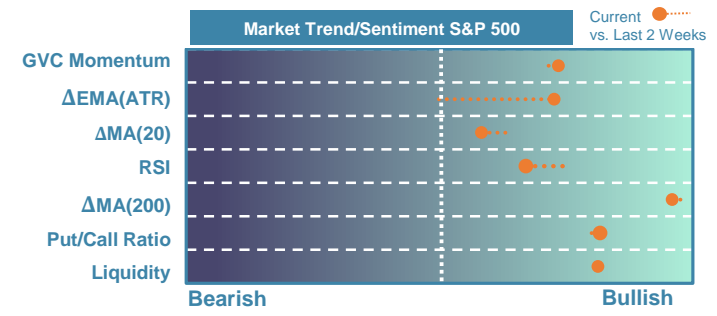


Market Index	Last	Daily Var. 22:00 PM	Future 8:42 AM	Yearly Var.
DJ Eurostoxx 50	4,930.42	-0.62%	0.41%	9.04%
DAX 40	17,746.27	-0.38%	0.38%	5.94%
CAC 40	8,019.73	-0.10%	0.45%	6.32%
FTSE 100	7,669.23	0.12%	0.88%	-0.83%
IBEX 35	10,325.70	0.19%	0.34%	2.21%

Fixed Income	Last	Daily Var.	Bip Var.	Yearly Var.
Bond Spain 10Y	3.12	1.53%	4.70	4.13%
Bond Germany 10Y	2.30	1.32%	3.00	13.26%
Bond U.K. 10Y	3.97	-0.13%	-0.50	12.29%
H.Yield ICE BofA	6.39	0.16%	-	-2.55%

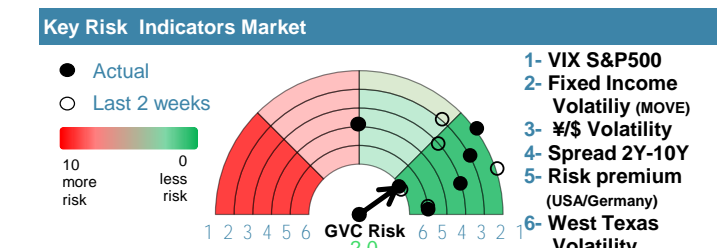


EEUU & ASIA



Market Index	Last	Daily Var. 22:00 PM	Future 8:42 AM	Yearly Var.
DJ Industrial	38,769.66	0.12%	0.15%	2.87%
S&P 500	5,117.94	-0.11%	0.39%	7.30%
Nasdaq 100	17,951.69	-0.37%	0.60%	6.69%
Nikkei 225	38,820.49	-2.19%	0.00%	16.01%
Shanghai 30	3,068.46	0.74%	3.87%	3.14%

Fixed Income	Last	Daily Var.	Bip Var.	Yearly Var.
Bond EEUU 10Y	4.10	0.38%	1.55	6.06%
Bond Japan 10Y	0.76	3.71%	2.70	20.80%
Bond China 10Y	2.31	0.43%	1.00	-10.31%
H.Yield ICE BofA	7.50	-0.44%	-	0.99%



Commodities	Last	Daily Var.	Yearly Var.
Brent Oil	82.21	0.16%	6.71%
Gold	2,184.65	0.52%	5.77%
CRB Index	320.99	0.55%	6.50%
Copper (USD/LBS)	3.93	0.95%	0.98%

Currency	Last	Daily Var.	Yearly Var.
€/\$	1.09	-0.11%	-1.00%
¥/\$	146.75	-0.21%	4.09%
£/€	0.85	0.29%	-1.53%
B/\$	72,147.13	5.76%	71.74%

Region/ Event	Relevance	Period	Previous	Forecast	Actual	Impact
CPI Final (Y.Y)	★★★★	Feb 2024	2.50%	2.50%	2.50%	Neutral
HICP Final (Y.Y)	★★★★	Feb 2024	2.70%	2.70%	2.70%	Neutral
Unemployment Rate	★★★★	Jan 2024	3.8	3.81	3.9	Low
Claim. Count Unem Chng	★★★★	Feb 2024	14.1K	-	16.8K	Low
CPI (f.) (Y.Y)	★★★★	Feb 2024	3.10%	3.12%	-	-
Core CPI (Y.Y)	★★★★	Feb 2024	3.90%	3.70%	-	-