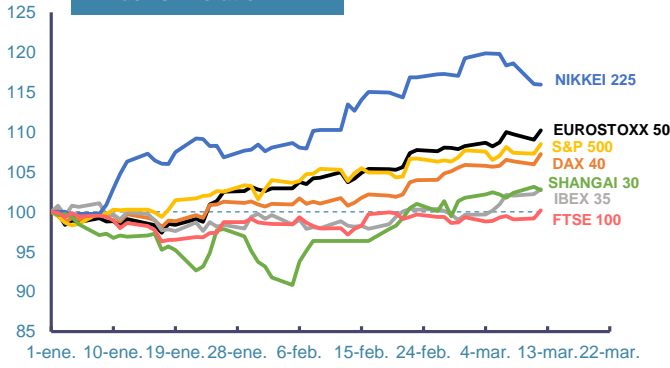
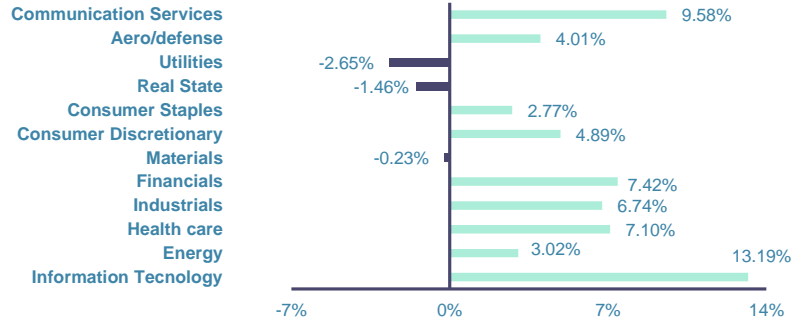


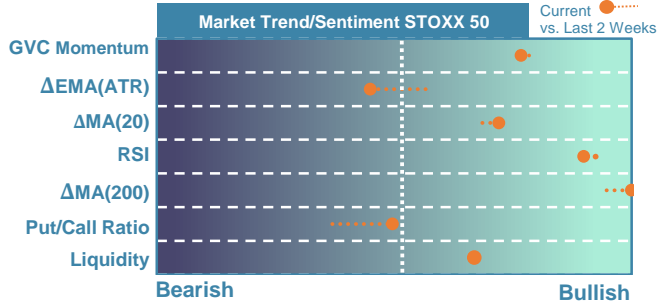
**Index's Evolution YTD**



**MSCI World Sector Evolution YTD**

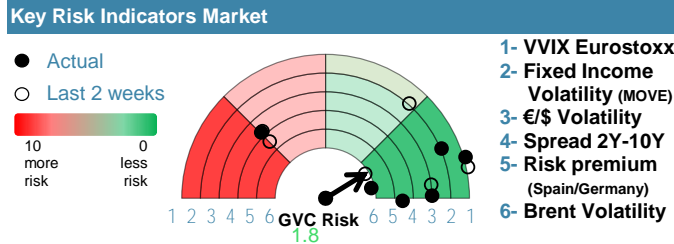


**EUROPE**



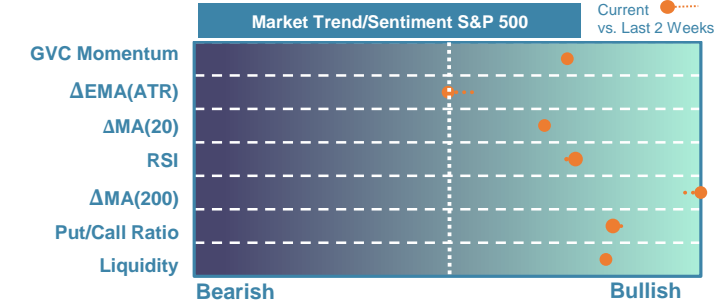
Market Index	Last	Daily Var. 22:00 PM	Future 8:30 AM	Yearly Var.
DJ Eurostoxx 50	4,983.20	1.07%	0.02%	10.21%
DAX 40	17,965.11	1.23%	-0.02%	7.24%
CAC 40	8,087.48	0.84%	-0.04%	7.22%
FTSE 100	7,747.81	1.02%	-0.02%	0.19%
IBEX 35	10,388.90	0.61%	-0.14%	2.84%

Fixed Income	Last	Daily Var.	Bip Var.	Yearly Var.
Bond Spain 10Y	3.14	0.35%	1.10	4.50%
Bond Germany 10Y	2.33	1.22%	2.80	14.64%
Bond U.K. 10Y	3.95	-0.68%	-2.70	11.53%
H.Yield ICE BofA	6.39	0.40%	-	-2.71%



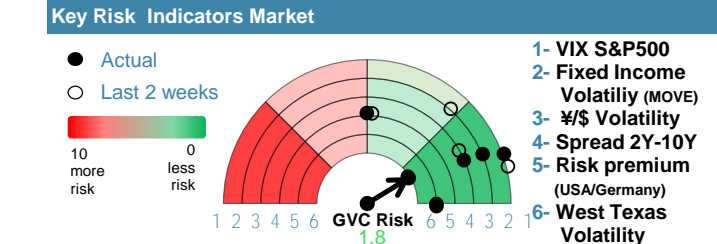
Commodities	Last	Daily Var.	Yearly Var.
Brent Oil	81.92	-0.35%	6.33%
Gold	2,163.10	-0.99%	4.73%
CRB Index	321.42	0.14%	6.64%
Copper (USD/LBS)	3.93	0.09%	1.07%

**EEUU & ASIA**



Market Index	Last	Daily Var. 22:00 PM	Future 8:30 AM	Yearly Var.
DJ Industrial	39,005.49	0.61%	0.17%	3.49%
S&P 500	5,175.27	1.12%	0.15%	8.50%
Nasdaq 100	18,219.11	1.49%	0.27%	8.28%
Nikkei 225	38,797.51	-0.06%	0.00%	15.94%
Shanghai 30	3,055.94	-0.41%	-0.57%	2.72%

Fixed Income	Last	Daily Var.	Bip Var.	Yearly Var.
Bond EEUU 10Y	4.16	1.38%	5.65	7.52%
Bond Japan 10Y	0.76	1.19%	0.90	22.24%
Bond China 10Y	2.36	1.95%	4.50	-8.57%
H.Yield ICE BofA	7.50	-0.05%	-	1.43%



Currency	Last	Daily Var.	Yearly Var.
€/\$	1.09	0.00%	-1.01%
¥/\$	147.64	0.60%	4.72%
£/€	0.85	0.08%	-1.45%
B/\$	71,394.56	-1.04%	69.95%

Region/ Event	Relevance	Period	Previous	Forecast	Actual	Impact
Initial Jobless	★★★★	W 09 Mar	217.000	215.600	-	-
HICP (f.) (Y.Y)	★★★	Feb 2024	2.90%	2.90%	-	-
Retail Sales (M.M)	★★★★	Feb 2024	-0.80%	0.76%	-	-
PPI Final Demand (M.M)	★★★	Feb 2024	0.30%	0.33%	-	-
HICP (M.M)	★★★	Feb 2024	0.40%	0.40%	-	-
CPI (f.) (Y.Y)	★★★	Feb 2024	2.80%	2.81%	-	-
Core CPI (Y.Y)	★★★★	Feb 2024	3.60%	-	-	-