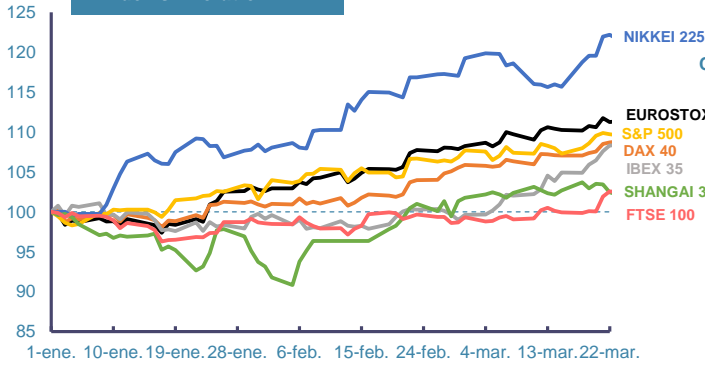
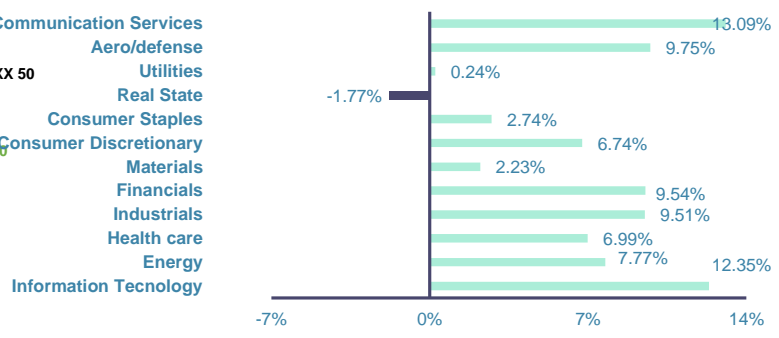


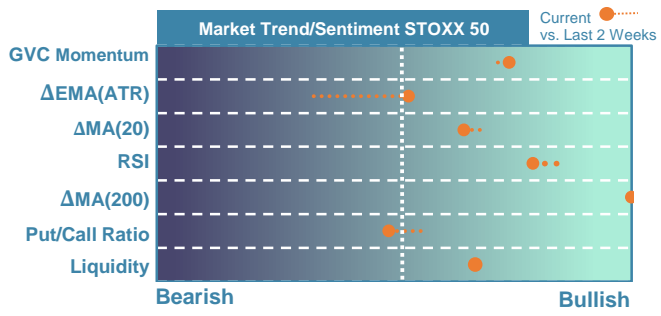
Index's Evolution YTD



MSCI World Sector Evolution YTD

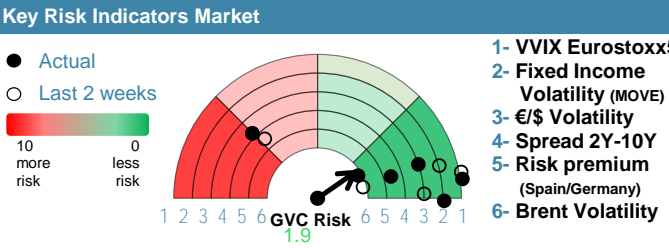


EUROPE

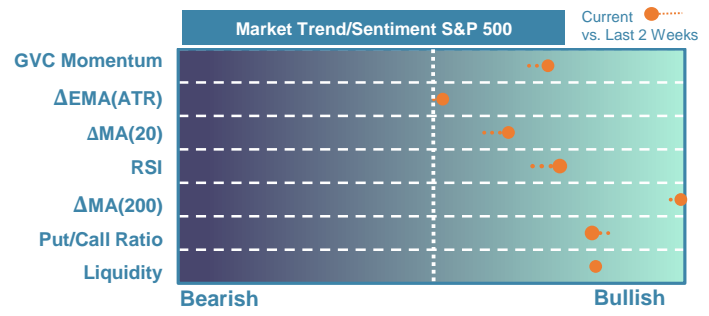


Market Index	Last	Daily Var. 22:00 PM	Future 8:44 AM	Yearly Var.
DJ Eurostoxx 50	5,081.74	0.35%	0.08%	12.39%
DAX 40	18,477.09	0.50%	0.09%	10.30%
CAC 40	8,204.81	0.25%	0.13%	8.77%
FTSE 100	7,931.98	0.01%	0.35%	2.57%
IBEX 35	11,111.30	1.09%	-0.01%	9.99%

Fixed Income	Last	Daily Var.	Bip Var.	Yearly Var.
Bond Spain 10Y	3.13	-1.54%	-4.90	4.30%
Bond Germany 10Y	2.29	-2.43%	-5.70	12.96%
Bond U.K. 10Y	3.93	-1.11%	-4.40	11.05%
H.Yield ICE BofA	6.39	-0.06%	-	-1.27%

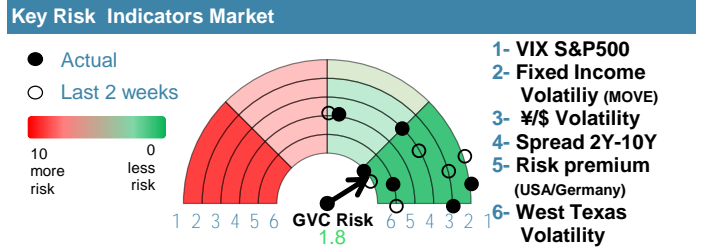


EEUU & ASIA



Market Index	Last	Daily Var. 22:00 PM	Future 8:44 AM	Yearly Var.
DJ Industrial	39,760.08	1.22%	-0.11%	5.49%
S&P 500	5,248.49	0.86%	-0.09%	10.04%
Nasdaq 100	18,280.84	0.39%	-0.07%	8.65%
Nikkei 225	40,762.73	0.90%	0.00%	21.81%
Shanghai 30	2,993.14	-1.27%	1.66%	0.61%

Fixed Income	Last	Daily Var.	Bip Var.	Yearly Var.
Bond EEUU 10Y	4.19	-1.07%	-4.52	8.34%
Bond Japan 10Y	0.72	-2.18%	-1.60	15.04%
Bond China 10Y	2.31	0.22%	0.50	-10.31%
H.Yield ICE BofA	7.44	0.62%	-	1.37%



Commodities

Commodity	Last	Daily Var.	Yearly Var.
Brent Oil	86.09	-0.19%	11.75%
Gold	2,190.84	0.67%	6.07%
CRB Index	331.90	-0.35%	10.12%
Copper (USD/LBS)	4.02	0.22%	3.26%

Currency

Currency	Last	Daily Var.	Yearly Var.
€/€	1.08	-0.04%	-1.90%
¥/\$	151.28	-0.16%	7.30%
£/€	0.86	-0.08%	-1.13%
B/\$	69,150.13	-1.24%	64.60%

Region/ Event	Relevance	Period	Previous	Forecast	Actual	Impact
Retail Sales (Y.Y)	★★★★	Feb 2024	-1.40%	-0.52%	-2.70%	Medium
GDP (f.)	★★★★	Q4 2023	3.20%	3.22%	-	-
Unemployment Chg	★★★★	Mar 2024	11.000	9.800	-	-
Unemployment Rate	★★★★	Mar 2024	5.90%	5.91%	-	-
Retail Sales (M.M)	★★★★	Feb 2024	-0.40%	0.31%	-1.90%	Medium
Initial Jobless	★★★★	W 23 Mar	210.000	211.700	-	-
Pending Sales Chg. (M.M)	★★★★	Feb 2024	-4.90%	1.02%	-	-
Michigan Sentiment (f.)	★★★★	Mar 2024	76.5	76.6	-	-