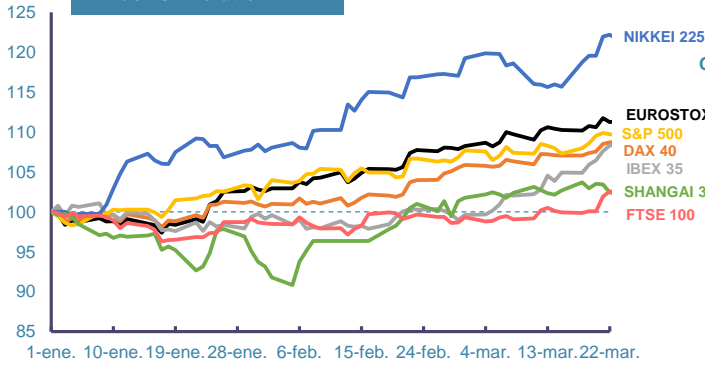
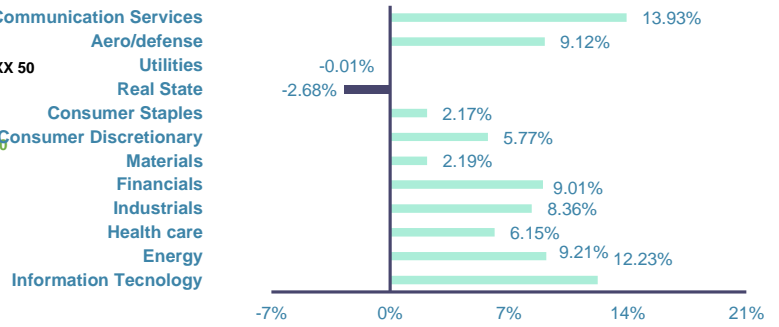


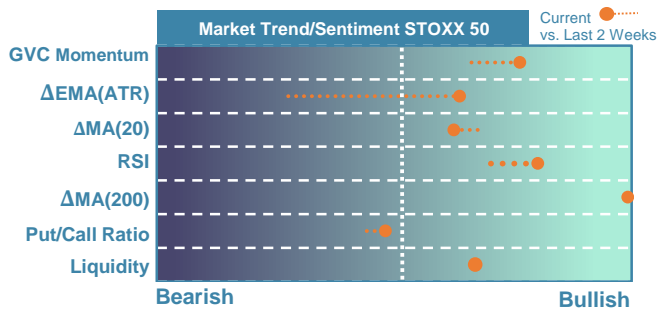
Index's Evolution YTD



MSCI World Sector Evolution YTD

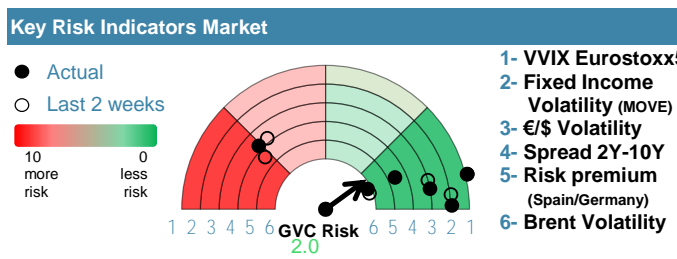


EUROPE



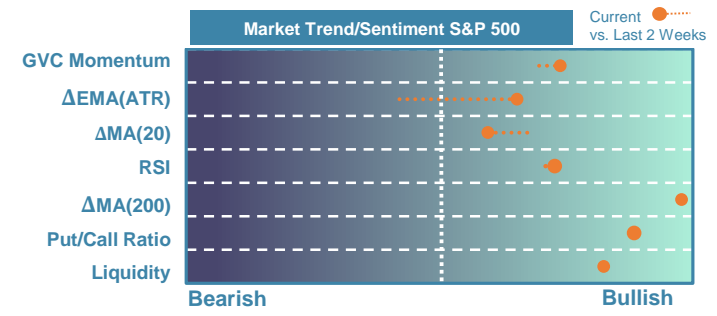
Market Index	Last	Daily Var. 22:00 PM	Future 9:31 AM	Yearly Var.
DJ Eurostoxx 50	5,083.42	0.00%	0.44%	12.42%
DAX 40	18,492.49	0.00%	0.17%	10.39%
CAC 40	8,205.81	0.00%	0.23%	8.78%
FTSE 100	7,952.62	0.00%	0.40%	2.84%
IBEX 35	11,074.60	0.00%	-0.07%	9.63%

Fixed Income	Last	Daily Var.	Bip Var.	Yearly Var.
Bond Spain 10Y	3.15	0.00%	0.00	5.03%
Bond Germany 10Y	2.29	0.00%	0.00	12.96%
Bond U.K. 10Y	3.94	0.00%	0.00	11.22%
H.Yield ICE BofA	6.39	-0.97%	-	-1.27%



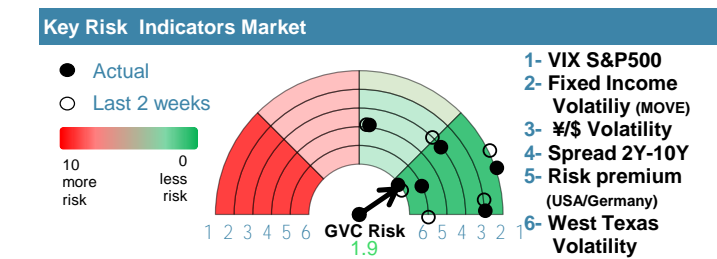
Commodities	Last	Daily Var.	Yearly Var.
Brent Oil	87.42	-0.07%	13.47%
Gold	2,235.12	0.94%	8.21%
CRB Index	338.60	0.76%	12.34%
Copper (USD/LBS)	4.07	1.03%	4.52%

EEUU & ASIA



Market Index	Last	Daily Var. 22:00 PM	Future 9:31 AM	Yearly Var.
DJ Industrial	39,566.85	-0.60%	-0.35%	4.98%
S&P 500	5,243.77	-0.20%	-0.12%	9.94%
Nasdaq 100	18,293.20	0.21%	-0.09%	8.72%
Nikkei 225	39,803.09	-1.40%	0.00%	18.94%
Shanghai 30	3,077.38	1.19%	2.67%	3.44%

Fixed Income	Last	Daily Var.	Bip Var.	Yearly Var.
Bond EEUU 10Y	4.33	2.83%	11.89	11.88%
Bond Japan 10Y	0.74	1.09%	0.80	18.88%
Bond China 10Y	2.31	0.52%	1.20	-10.31%
H.Yield ICE BofA	7.58	-1.91%	-	0.66%



Currency	Last	Daily Var.	Yearly Var.
€/€	1.07	-0.48%	-2.66%
¥/\$	151.62	0.18%	7.54%
£/€	0.86	0.04%	-1.30%
B/\$	69,798.94	-0.21%	66.15%

Region/ Event	Relevance	Period	Previous	Forecast	Actual	Impact
Manufacture PMI	★★★★	Mar 2024	41.6	-	-	-
Manufacture PMI	★★★★	Mar 2024	48.7	-	-	-
Manufacture PMI	★★★★	Mar 2024	45.8	-	-	-
Manufacture PMI	★★★★	Mar 2024	45.7	-	-	-
Manufacture PMI	★★★★	Mar 2024	49.9	-	-	-
JOLTS Job Openings	★★★	Feb 2024	8.863	-	-	-
HICP (Pre.) (Y.Y)	★★★★	Mar 2024	2.70%	-	-	-
CPI (Pre.) (Y.Y)	★★★★	Mar 2024	2.50%	-	-	-
National House Prices	★★★★	Mar 2024	1.20%	2.43%	1.60%	Low