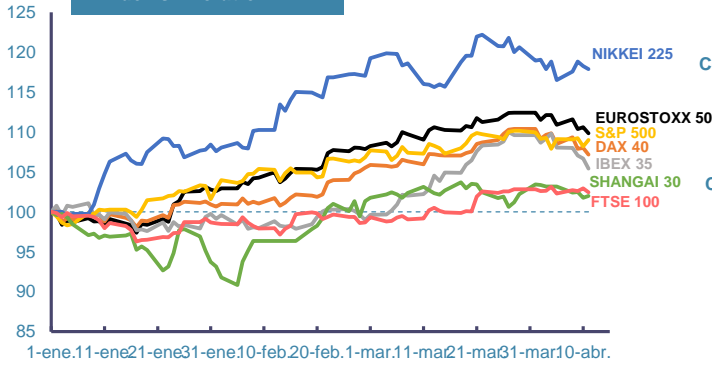
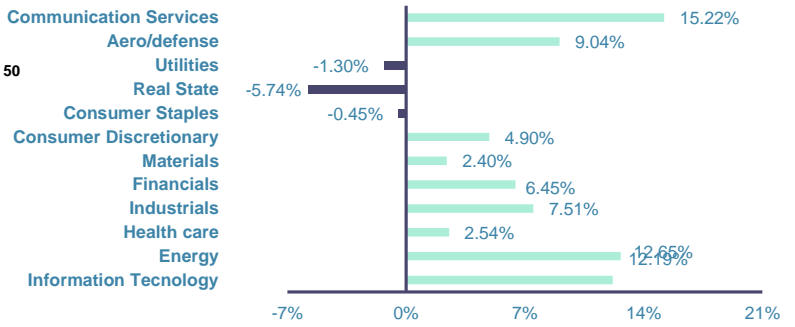


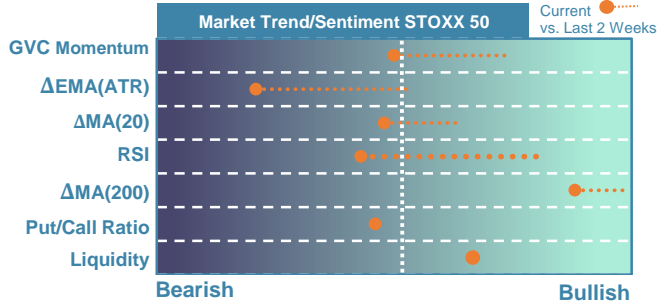
Index's Evolution YTD



MSCI World Sector Evolution YTD

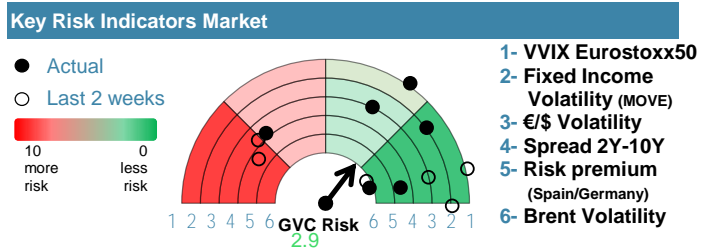


EUROPE



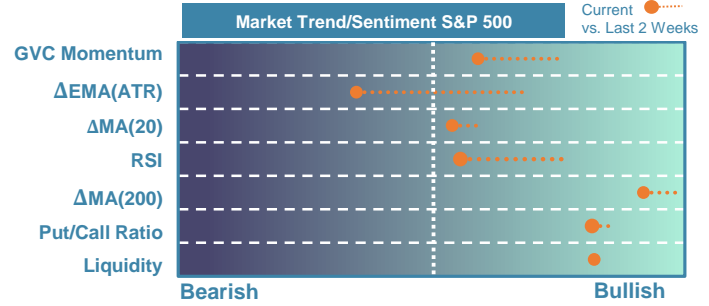
Market Index	Last	Daily Var. 22:00 PM	Future 8:42 AM	Yearly Var.
DJ Eurostoxx 50	4,966.68	-0.68%	0.89%	9.84%
DAX 40	17,954.48	-0.79%	0.81%	7.18%
CAC 40	8,023.74	-0.27%	0.70%	6.37%
FTSE 100	7,923.80	-0.47%	0.52%	2.46%
IBEX 35	10,649.80	-1.16%	0.49%	5.42%

Fixed Income	Last	Daily Var.	Bip Var.	Yearly Var.
Bond Spain 10Y	3.30	1.92%	6.20	10.00%
Bond Germany 10Y	2.48	1.98%	4.80	22.08%
Bond U.K. 10Y	4.21	1.30%	5.40	18.82%
H.Yield ICE BofA	6.39	-1.13%	-	0.38%



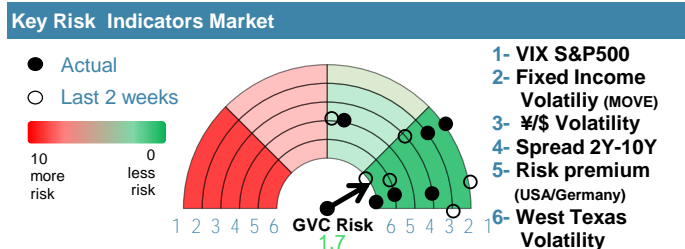
Commodities	Last	Daily Var.	Yearly Var.
Brent Oil	89.74	-0.82%	16.48%
Gold	2,339.12	0.30%	13.25%
CRB Index	342.82	-0.76%	13.74%
Copper (USD/LBS)	4.27	-0.52%	9.66%

EEUU & ASIA



Market Index	Last	Daily Var. 22:00 PM	Future 8:42 AM	Yearly Var.
DJ Industrial	38,459.08	-0.01%	0.11%	2.04%
S&P 500	5,199.06	0.74%	0.03%	9.00%
Nasdaq 100	18,307.98	1.65%	0.06%	8.81%
Nikkei 225	39,442.63	-0.35%	0.36%	17.87%
Shanghai 30	3,034.25	0.23%	-1.86%	1.99%

Fixed Income	Last	Daily Var.	Bip Var.	Yearly Var.
Bond EEUU 10Y	4.57	0.59%	2.67	18.27%
Bond Japan 10Y	0.86	9.10%	7.20	38.08%
Bond China 10Y	2.30	0.04%	0.10	-10.70%
H.Yield ICE BofA	7.87	-0.75%	-	5.74%



Currency	Last	Daily Var.	Yearly Var.
€/€	1.07	-0.17%	-2.82%
¥/\$	153.22	0.19%	8.68%
£/€	0.86	-0.08%	-1.32%
B/\$	70,075.06	-0.67%	66.81%

Region/ Event	Relevance	Period	Previous	Forecast	Actual	Impact
CPI Final (Y.Y)	★★★★	Mar 2024	2.20%	2.20%	2.20%	Low
HICP Final (Y.Y)	★★★★	Mar 2024	2.30%	2.30%	2.30%	Low
Industrial Output (M.M)	★★★	Feb 2024	-0.20%	0.02%	1.10%	Medium
CPI (f.) (Y.Y)	★★★	Mar 2024	3.20%	3.22%	-	-
Core CPI (Y.Y)	★★★★	Mar 2024	3.50%	-	-	-
CPI (f.) (Y.Y)	★★★★	Mar 2024	2.40%	2.40%	-	-
Export Prices (M.M)	★★★	Mar 2024	0.80%	0.48%	-	-
Import Prices (M.M)	★★★	Mar 2024	0.30%	0.40%	-	-
U Mich Sentiment Prelim	★★★★	Apr 2024	79.4	79.11	-	-