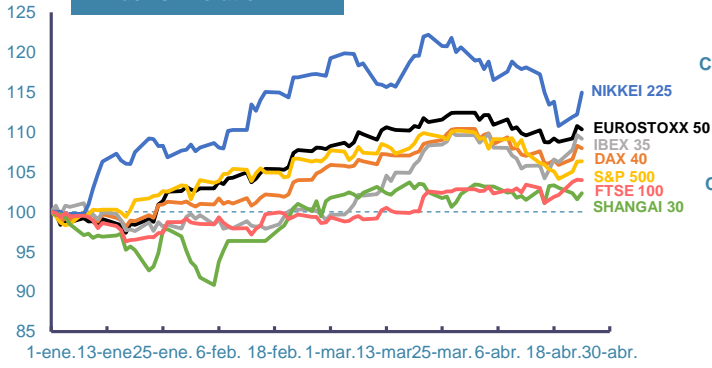
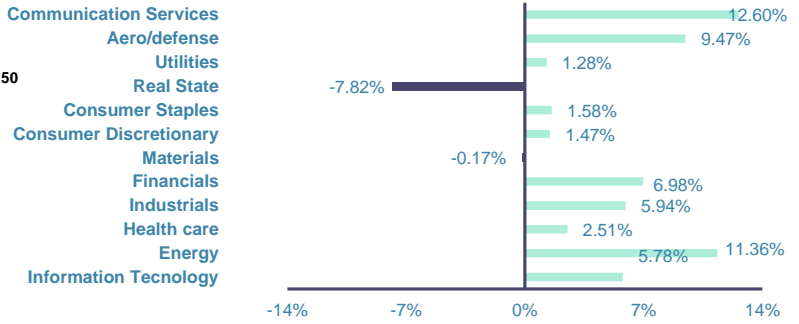


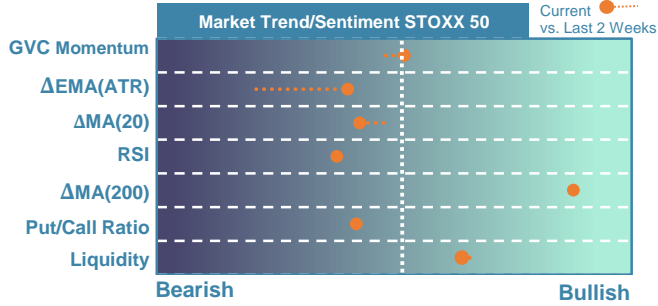
Index's Evolution YTD



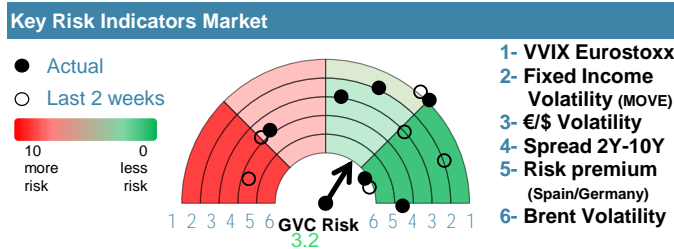
MSCI World Sector Evolution YTD



EUROPE

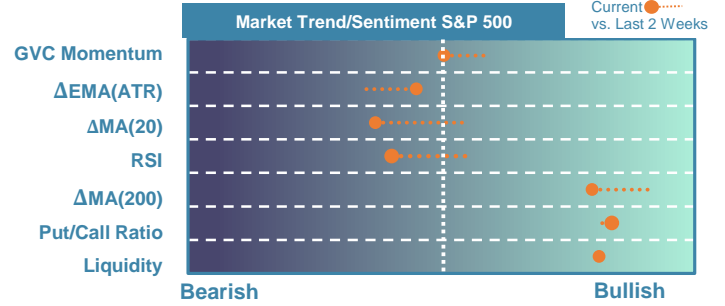


Market Index	Last	Daily Var. 22:00 PM	Future 8:32 AM	Yearly Var.
DJ Eurostoxx 50	4,989.88	-0.37%	-0.06%	10.36%
DAX 40	18,088.70	-0.27%	-0.05%	7.98%
CAC 40	8,091.86	-0.17%	-0.17%	7.27%
FTSE 100	8,040.38	-0.06%	0.12%	3.97%
IBEX 35	11,027.80	-0.43%	0.16%	9.16%
Fixed Income	Last	Daily Var.	Bip Var.	Yearly Var.
Bond Spain 10Y	3.38	3.30%	10.80	12.77%
Bond Germany 10Y	2.59	3.19%	8.00	27.45%
Bond U.K. 10Y	4.34	2.19%	9.30	22.61%
H.Yield ICE BofA	6.39	-0.29%	-	2.11%

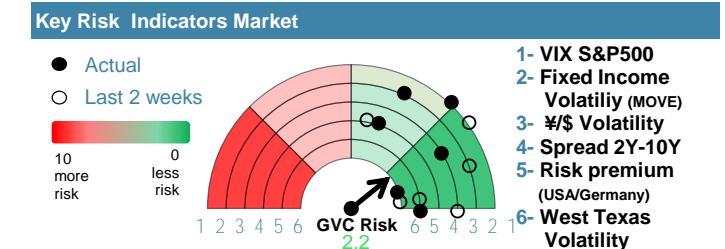


Commodities	Last	Daily Var.	Yearly Var.
Brent Oil	88.02	-0.45%	14.25%
Gold	2,332.07	0.56%	12.91%
CRB Index	345.27	-0.14%	14.55%
Copper (USD/LBS)	4.48	0.61%	15.06%

EEUU & ASIA



Market Index	Last	Daily Var. 22:00 PM	Future 8:32 AM	Yearly Var.
DJ Industrial	38,460.92	-0.11%	-0.23%	2.05%
S&P 500	5,071.63	0.02%	-0.73%	6.33%
Nasdaq 100	17,526.80	0.32%	-1.33%	4.17%
Nikkei 225	38,460.08	2.42%	-2.11%	14.93%
Shanghai 30	3,044.82	0.76%	-0.08%	2.35%
Fixed Income	Last	Daily Var.	Bip Var.	Yearly Var.
Bond EEUU 10Y	4.64	0.85%	3.93	20.07%
Bond Japan 10Y	0.88	-0.67%	-0.60	41.44%
Bond China 10Y	2.28	1.74%	3.90	-11.79%
H.Yield ICE BofA	7.90	-0.28%	-	6.67%



Currency	Last	Daily Var.	Yearly Var.
€/€	1.07	-0.02%	-3.06%
¥/\$	155.22	0.28%	10.10%
£/€	0.86	-0.09%	-0.80%
B/\$	64,276.20	-3.23%	53.00%

Region/ Event	Relevance	Period	Previous	Forecast	Actual	Impact
Initial Jobless	★★★★	W 20 Apr	212.000	214.400	-	-
Consumer Sentiment	★★★	May 2024	-27.4	-26.08	-24.2	Medium
Pending Sales Change	★★★	Mar 2024	1.60%	0.58%	-	-
GDP Advance	★★★★	Q1 2024	3.40%	2.43%	-	-
CBI Distributive Trades	★★★	Apr 2024	2	-	-	-
Business Climate Mfg	★★★★	Apr 2024	102	101.8	-	-
Leading Index	★★★★	Feb 2024	2.3	-	-	-