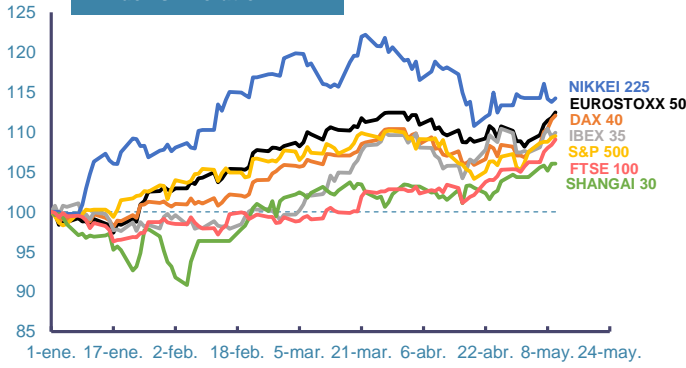
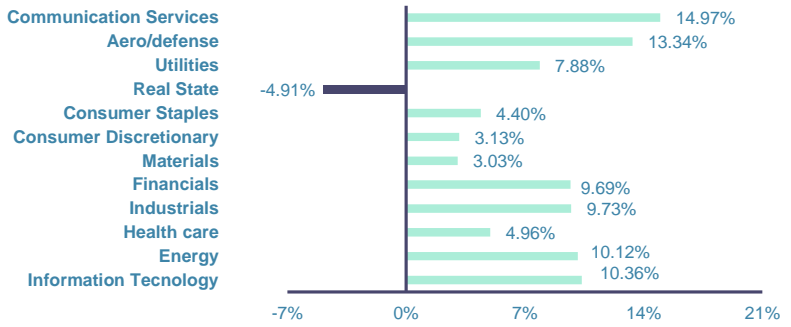


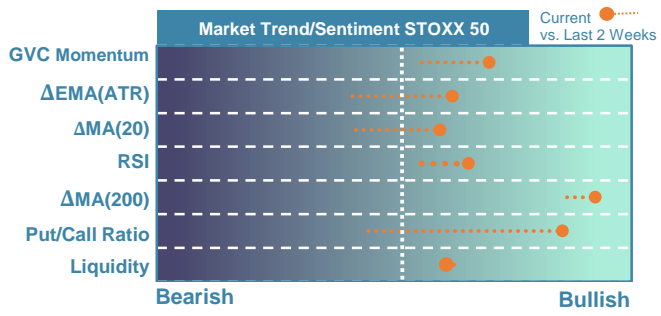
Index's Evolution YTD



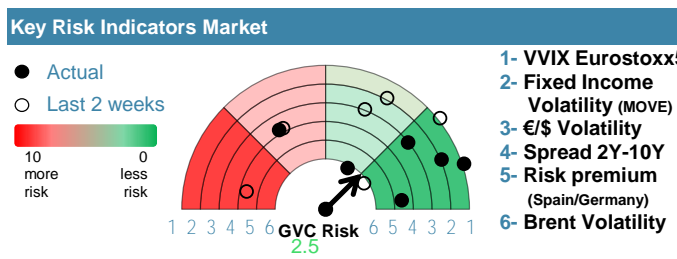
MSCI World Sector Evolution YTD



EUROPE

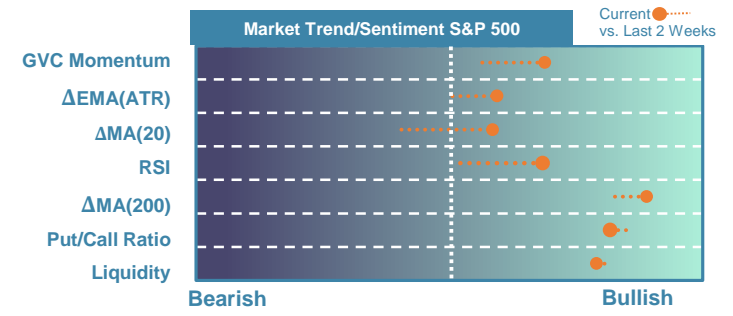


Market Index	Last	Daily Var. 22:00 PM	Future 8:39 AM	Yearly Var.
DJ Eurostoxx 50	5,085.09	0.61%	0.16%	12.46%
DAX 40	18,772.85	0.46%	0.15%	12.07%
CAC 40	8,219.14	0.38%	0.12%	8.96%
FTSE 100	8,433.76	0.63%	-0.17%	9.06%
IBEX 35	11,105.50	0.50%	-0.01%	9.93%
Fixed Income	Last	Daily Var.	Bip Var.	Yearly Var.
Bond Spain 10Y	3.31	0.64%	2.10	10.33%
Bond Germany 10Y	2.52	0.92%	2.30	24.20%
Bond U.K. 10Y	4.17	0.58%	2.40	17.77%
H.Yield ICE BofA	6.39	-0.05%	-	-0.11%

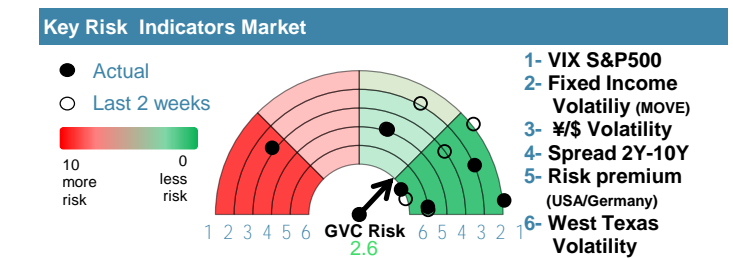


Commodities	Last	Daily Var.	Yearly Var.
Brent Oil	82.79	-1.30%	7.46%
Gold	2,361.96	1.08%	14.36%
CRB Index	337.20	-0.17%	11.88%
Copper (USD/LBS)	4.66	1.69%	19.84%

EEUU & ASIA



Market Index	Last	Daily Var. 22:00 PM	Future 8:39 AM	Yearly Var.
DJ Industrial	39,512.84	0.32%	0.03%	4.84%
S&P 500	5,222.68	0.16%	0.10%	9.49%
Nasdaq 100	18,161.18	0.26%	0.22%	7.94%
Nikkei 225	38,229.11	0.41%	-0.31%	14.24%
Shanghai 30	3,154.55	0.01%	0.34%	6.04%
Fixed Income	Last	Daily Var.	Bip Var.	Yearly Var.
Bond EEUU 10Y	4.50	0.97%	4.32	16.41%
Bond Japan 10Y	0.91	-0.99%	-0.90	44.80%
Bond China 10Y	2.32	0.17%	0.40	-10.00%
H.Yield ICE BofA	7.73	-0.28%	-	4.33%



Currency	Last	Daily Var.	Yearly Var.
€/\$	1.08	-0.10%	-2.41%
¥/\$	155.78	0.27%	10.49%
£/€	0.86	-0.08%	-0.68%
B/\$	60,984.28	-3.07%	45.17%

Region/ Event	Relevance	Period	Previous	Forecast	Actual	Impact
---------------	-----------	--------	----------	----------	--------	--------

No relevant event