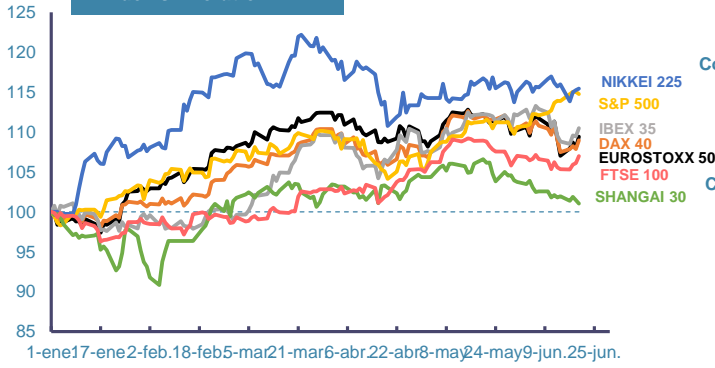
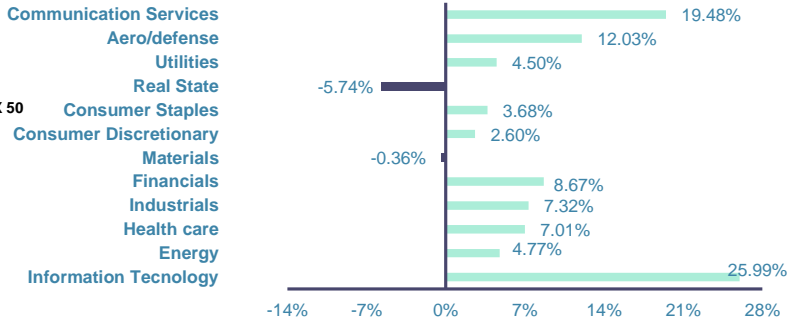


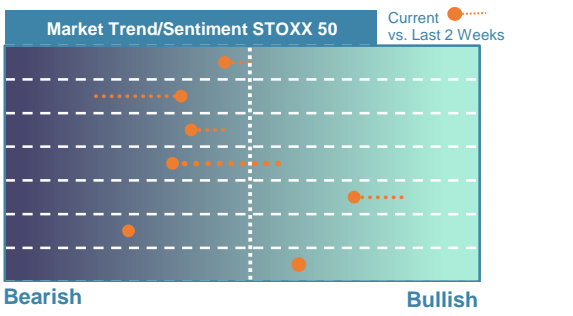
Index's Evolution YTD



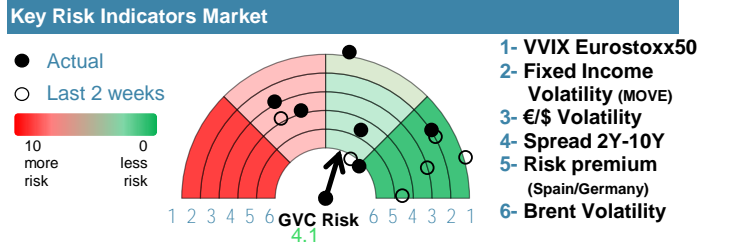
MSCI World Sector Evolution YTD



EUROPE

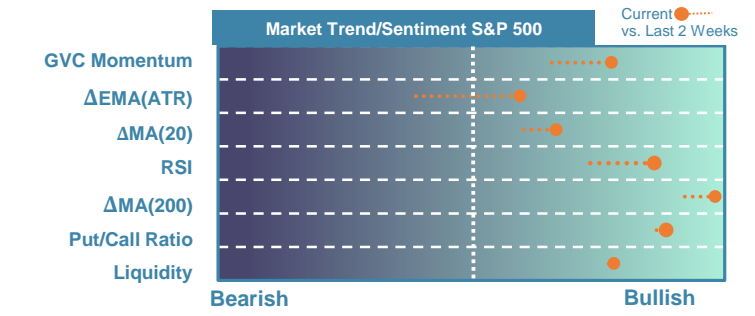


Market Index	Last	Daily Var. 22:00 PM	Future 8:26 AM	Yearly Var.
DJ Eurostoxx 50	4,947.73	1.28%	0.00%	9.42%
DAX 40	18,254.18	1.03%	-0.01%	8.97%
CAC 40	7,671.34	1.34%	0.03%	1.70%
FTSE 100	8,272.46	0.82%	-0.01%	6.97%
IBEX 35	11,160.50	0.94%	0.00%	10.48%
Fixed Income	Last	Daily Var.	Bip Var.	Yearly Var.
Bond Spain 10Y	3.34	-0.06%	-0.20	11.40%
Bond Germany 10Y	2.42	0.83%	2.00	19.47%
Bond U.K. 10Y	4.06	-0.32%	-1.30	14.64%
H.Yield ICE BofA	6.39	0.10%	-	-1.11%

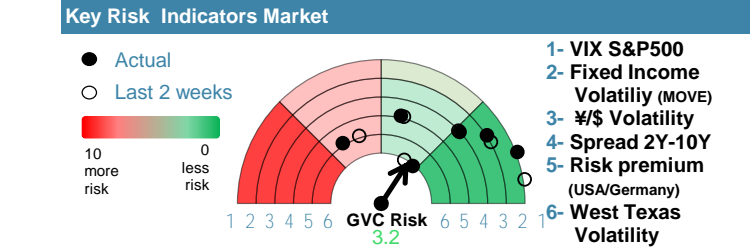


Commodities	Last	Daily Var.	Yearly Var.
Brent Oil	85.71	0.75%	11.25%
Gold	2,358.69	1.43%	14.20%
CRB Index	346.17	-0.07%	14.85%
Copper (USD/LBS)	4.52	1.66%	16.21%

EEUU & ASIA



Market Index	Last	Daily Var. 22:00 PM	Future 8:26 AM	Yearly Var.
DJ Industrial	39,134.76	0.77%	0.03%	3.83%
S&P 500	5,473.17	-0.25%	0.11%	14.75%
Nasdaq 100	19,752.30	-0.79%	0.26%	17.39%
Nikkei 225	38,633.02	0.16%	-0.03%	15.45%
Shanghai 30	3,005.44	-0.42%	-1.45%	1.03%
Fixed Income	Last	Daily Var.	Bip Var.	Yearly Var.
Bond EEUU 10Y	4.25	0.92%	3.87	10.03%
Bond Japan 10Y	0.96	4.22%	3.90	54.24%
Bond China 10Y	2.24	-0.31%	-0.70	-12.99%
H.Yield ICE BofA	7.58	-0.21%	-	2.41%



Currency	Last	Daily Var.	Yearly Var.
€/€	1.07	-0.39%	-3.04%
¥/\$	158.91	0.57%	12.72%
£/€	0.85	0.12%	-2.46%
B/\$	64,910.78	0.08%	54.51%

Region/ Event	Relevance	Period	Previous	Forecast	Actual	Impact
S&P Global Comp. PMI	★★★★	Jun 2024	52.2	52.5	-	-
Retail Sales (M.M)	★★★★	May 2024	-2.30%	1.54%	2.90%	Medium
Composite PMI	★★★★	Jun 2024	53	53.16	-	-
Exist. Home Sales % Chg	★★★	May 2024	-1.90%	-	-	-
Existing Home Sales	★★★★	May 2024	4.14	4.059	-	-
S&P Global Mfg. PMI	★★★★	Jun 2024	51.3	50.98	-	-
S&P Global Svcs. PMI	★★★★	Jun 2024	54.8	53.72	-	-
Composite PMI	★★★★	Jun 2024	48.9	49.36	-	-
Composite PMI	★★★★	Jun 2024	52.4	52.71	-	-