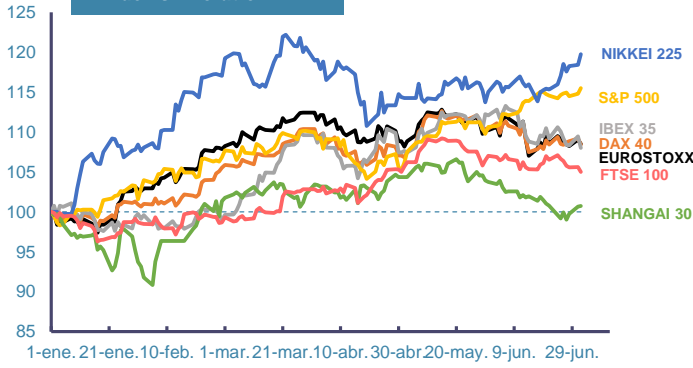
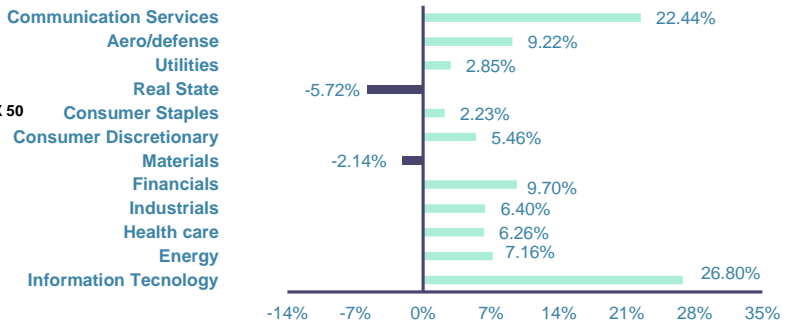


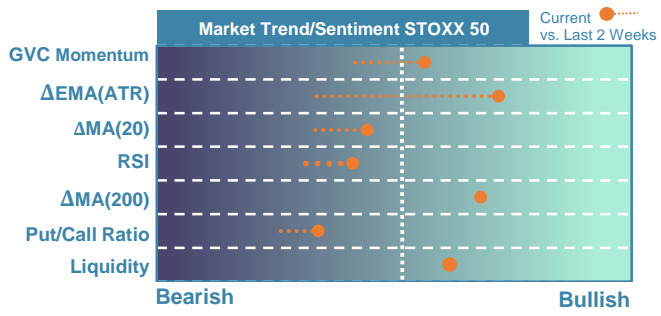
Index's Evolution YTD



MSCI World Sector Evolution YTD

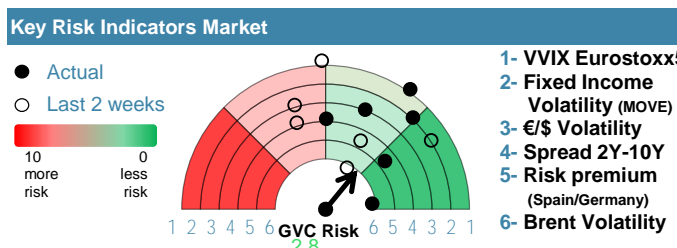


EUROPE



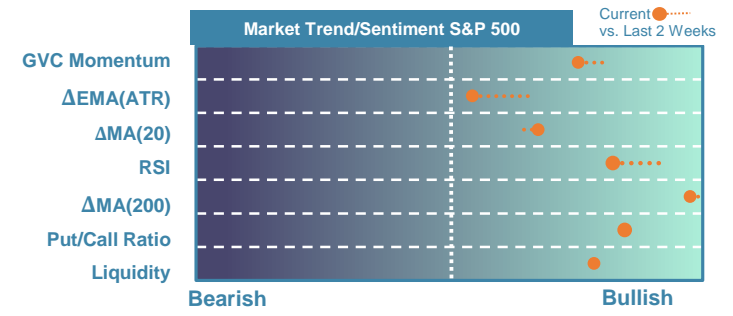
Market Index	Last	Daily Var. 22:00 PM	Future 8:27 AM	Yearly Var.
DJ Eurostoxx 50	4,906.33	-0.48%	0.75%	8.51%
DAX 40	18,164.06	-0.69%	0.47%	8.43%
CAC 40	7,538.29	-0.30%	0.83%	-0.07%
FTSE 100	8,121.20	-0.56%	0.67%	5.02%
IBEX 35	10,912.80	-1.30%	0.59%	8.03%

Fixed Income	Last	Daily Var.	Bip Var.	Yearly Var.
Bond Spain 10Y	3.45	-0.58%	-2.00	15.03%
Bond Germany 10Y	2.61	0.08%	0.20	28.49%
Bond U.K. 10Y	4.25	-0.77%	-3.30	20.12%
H.Yield ICE BofA	6.39	-0.13%	-	-0.31%



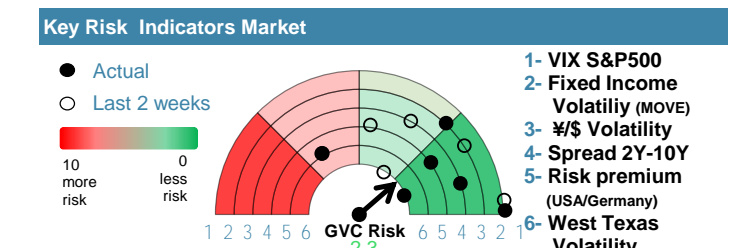
Commodities	Last	Daily Var.	Yearly Var.
Brent Oil	86.24	-0.42%	11.94%
Gold	2,328.80	0.02%	12.75%
CRB Index	343.21	0.28%	13.87%
Copper (USD/LBS)	4.42	0.02%	13.58%

EEUU & ASIA



Market Index	Last	Daily Var. 22:00 PM	Future 8:27 AM	Yearly Var.
DJ Industrial	39,331.85	0.41%	-0.08%	4.36%
S&P 500	5,509.01	0.62%	-0.08%	15.50%
Nasdaq 100	20,011.89	1.01%	-0.02%	18.93%
Nikkei 225	40,074.69	1.12%	1.32%	19.75%
Shanghai 30	2,997.01	0.08%	1.28%	0.74%

Fixed Income	Last	Daily Var.	Bip Var.	Yearly Var.
Bond EEUU 10Y	4.43	-1.02%	-4.56	14.63%
Bond Japan 10Y	1.11	3.36%	3.60	77.12%
Bond China 10Y	2.24	0.27%	0.60	-13.07%
H.Yield ICE BofA	7.73	0.27%	-	4.93%



Currency	Last	Daily Var.	Yearly Var.
€/\$	1.07	0.05%	-2.64%
¥/\$	161.44	0.00%	14.51%
£/€	0.85	-0.13%	-2.20%
B/\$	62,058.03	-1.29%	47.72%

Region/ Event	Relevance	Period	Previous	Forecast	Actual	Impact
S&P Global Comp (f.) PMI	★★★★	Jun 2024	50.6	50.61	-	-
S&P Global Svcs PMI	★★★	Jun 2024	54.2	53.65	-	-
S&P Global Comp (f.) PMI	★★★★	Jun 2024	48.2	48.2	-	-
S&P Global Comp (f.) PMI	★★★★	Jun 2024	50.8	50.79	-	-
Producer Prices (Y.Y)	★★★	May 2024	-5.7	-4.03	-	-
Services PMI	★★★	Jun 2024	56.9	56.3	-	-
S&P Global Svcs (f.) PMI	★★★★	Jun 2024	52.6	52.6	-	-
S&P Global Svcs PMI	★★★	Jun 2024	51.2	51.2	-	-