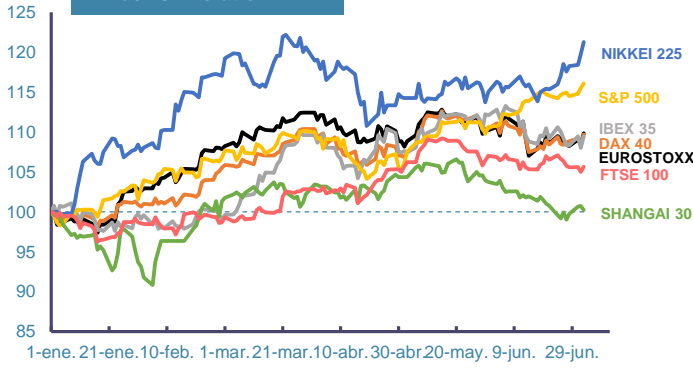
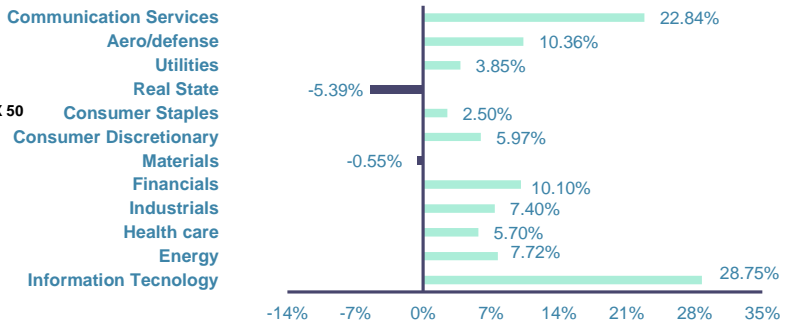


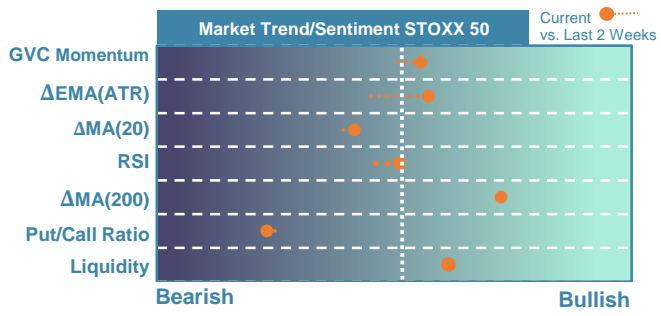
Index's Evolution YTD



MSCI World Sector Evolution YTD

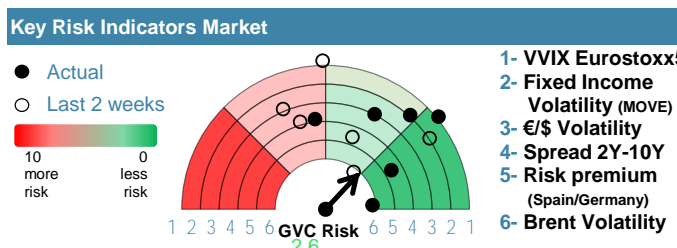


EUROPE

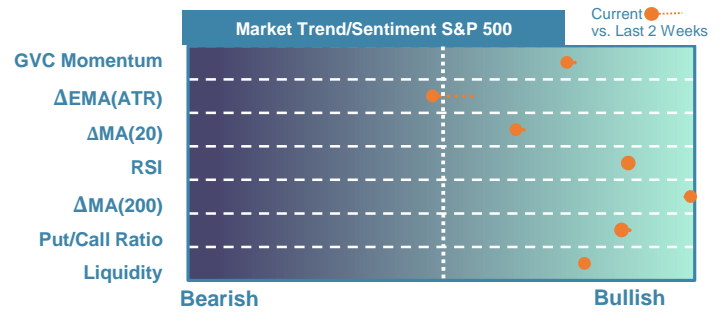


Market Index	Last	Daily Var. 22:00 PM	Future 9:33 AM	Yearly Var.
DJ Eurostoxx 50	4,965.80	1.21%	0.20%	9.82%
DAX 40	18,374.53	1.16%	0.21%	9.69%
CAC 40	7,632.08	1.24%	-0.20%	1.18%
FTSE 100	8,171.12	0.61%	0.01%	5.66%
IBEX 35	11,056.80	1.32%	-0.01%	9.45%

Fixed Income	Last	Daily Var.	Bip Var.	Yearly Var.
Bond Spain 10Y	3.38	-2.17%	-7.50	12.53%
Bond Germany 10Y	2.56	-1.92%	-5.00	26.02%
Bond U.K. 10Y	4.17	-1.86%	-7.90	17.89%
H.Yield ICE BofA	6.39	0.27%	-	-1.03%

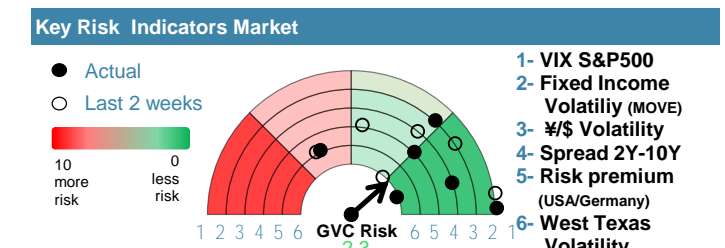


EEUU & ASIA



Market Index	Last	Daily Var. 22:00 PM	Future 9:33 AM	Yearly Var.
DJ Industrial	39,308.00	-0.06%	-0.14%	4.29%
S&P 500	5,537.02	0.51%	-0.12%	16.08%
Nasdaq 100	20,186.63	0.87%	-0.11%	19.97%
Nikkei 225	40,580.76	1.26%	0.00%	21.27%
Shanghai 30	2,982.38	-0.49%	-1.01%	0.25%

Fixed Income	Last	Daily Var.	Bip Var.	Yearly Var.
Bond EEUU 10Y	4.35	-1.91%	-8.47	12.44%
Bond Japan 10Y	1.10	-0.81%	-0.90	75.68%
Bond China 10Y	2.24	0.04%	0.10	-13.03%
H.Yield ICE BofA	7.62	0.79%	-	3.95%



Commodities	Last	Daily Var.	Yearly Var.
Brent Oil	87.34	1.28%	13.37%
Gold	2,363.24	1.48%	14.42%
CRB Index	345.23	0.59%	14.54%
Copper (USD/LBS)	4.53	2.59%	16.53%

Currency	Last	Daily Var.	Yearly Var.
€/\$	1.08	0.39%	-2.26%
¥/\$	161.60	0.10%	14.62%
£/€	0.85	-0.09%	-2.30%
B/\$	60,194.98	-3.00%	43.29%

Region/ Event	Relevance	Period	Previous	Forecast	Actual	Impact
Trade Balance	★★★	May 2024	22100M	20730M	24900M	Low
Imports (M.M)	★★★	May 2024	2%	-0.73%	-6.60%	Medium
Exports (M.M)	★★★	May 2024	1.60%	-1.80%	-3.60%	Medium
Reserve Assets Total	★★★★	Jun 2024	245904M	-	248106M	-
Sentix Index	★★★	Jul 2024	0.3	-1.15	-	-
Consumer Credit	★★★	May 2024	6400M	9.375	-	-
Employment Trend	★★★★	Jun 2024	111.44	-	-	-