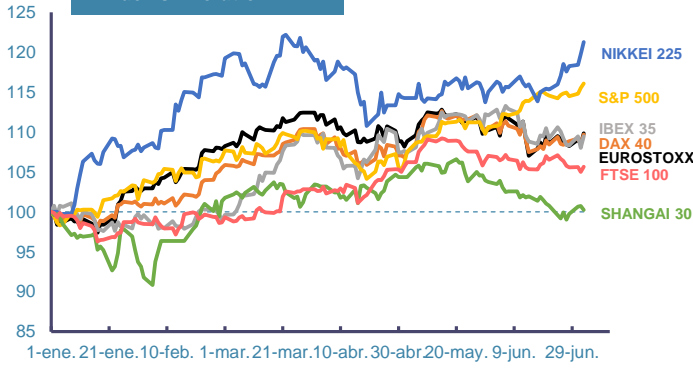
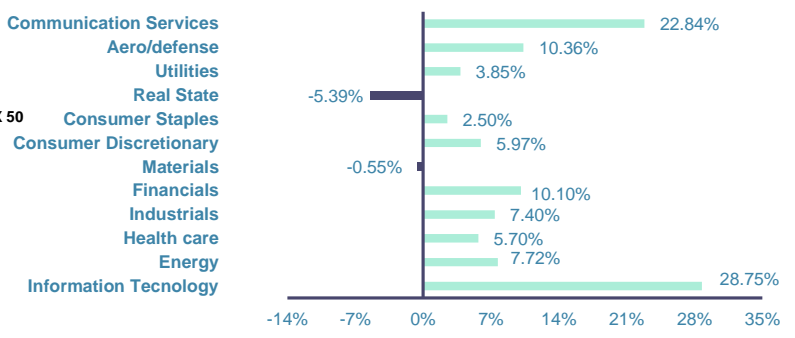


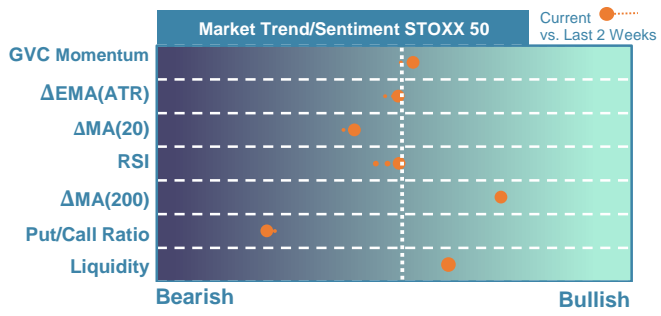
### Index's Evolution YTD



### MSCI World Sector Evolution YTD



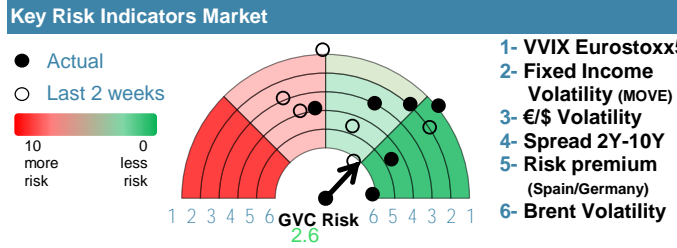
## EUROPE



Market Index	Last	Daily Var. 22:00 PM	Future 9:50 AM	Yearly Var.
DJ Eurostoxx 50	4,903.62	-1.33%	0.20%	8.45%
DAX 40	18,236.19	-1.28%	0.31%	8.86%
CAC 40	7,508.66	-1.56%	-0.01%	-0.46%
FTSE 100	8,139.81	-0.66%	0.36%	5.26%
IBEX 35	10,898.80	-1.12%	0.29%	7.89%

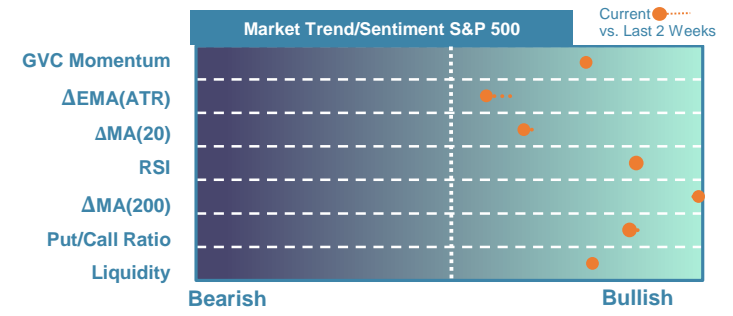
  

Fixed Income	Last	Daily Var.	Bip Var.	Yearly Var.
Bond Spain 10Y	3.38	-2.17%	-7.50	12.53%
Bond Germany 10Y	2.56	-1.92%	-5.00	26.02%
Bond U.K. 10Y	4.17	-1.86%	-7.90	17.89%
H.Yield ICE BofA	6.39	-0.14%	-	-1.71%



Commodities	Last	Daily Var.	Yearly Var.
Brent Oil	87.34	1.28%	13.37%
Gold	2,363.24	1.48%	14.42%
CRB Index	345.23	0.59%	14.54%
Copper (USD/LBS)	4.53	2.59%	16.53%

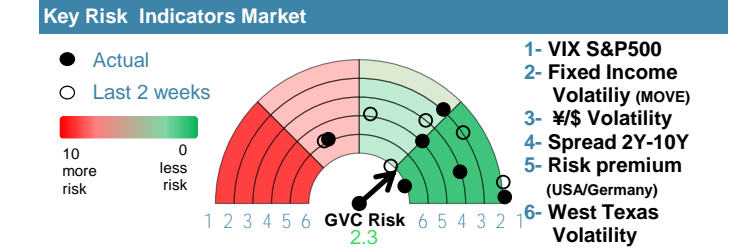
## EEUU & ASIA



Market Index	Last	Daily Var. 22:00 PM	Future 9:50 AM	Yearly Var.
DJ Industrial	39,291.97	-0.13%	-0.04%	4.25%
S&P 500	5,576.98	0.07%	0.07%	16.92%
Nasdaq 100	20,453.02	0.07%	0.15%	21.56%
Nikkei 225	41,580.17	1.96%	-0.05%	24.25%
Shanghai 30	2,959.37	1.26%	-0.21%	-0.52%

Fixed Income	Last	Daily Var.	Bip Var.	Yearly Var.
Bond EEUU 10Y	4.35	-1.91%	-8.47	12.44%
Bond Japan 10Y	1.10	-0.81%	-0.90	75.68%
Bond China 10Y	2.24	0.04%	0.10	-13.03%
H.Yield ICE BofA	7.57	-0.15%	-	2.27%



Currency	Last	Daily Var.	Yearly Var.
€/\$	1.08	0.39%	-2.26%
¥/\$	161.60	0.10%	14.62%
£/€	0.85	-0.09%	-2.30%
B/\$	60,194.98	-3.00%	43.29%

Region/ Event	Relevance	Period	Previous	Forecast	Actual	Impact
PPI (Y.Y)	★★★★	Jun 2024	-1.40%	-0.74%	-0.80%	Low
CPI (Y.Y)	★★★★	Jun 2024	0.30%	0.40%	0.20%	Low
Industrial Output (Y.Y)	★★★	May 2024	-2.90%	-	-	-