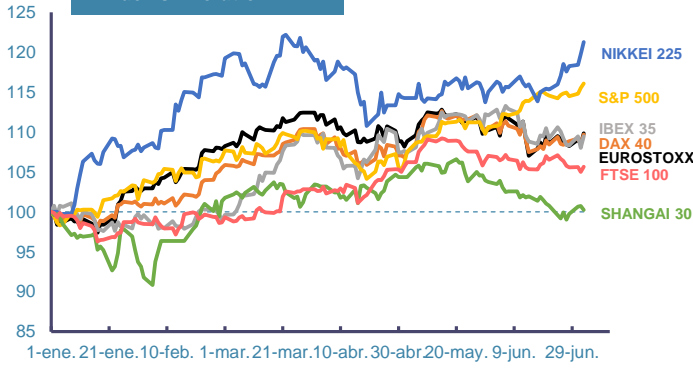
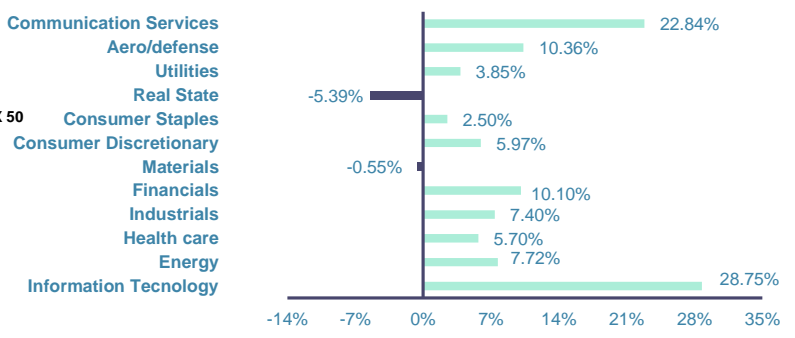


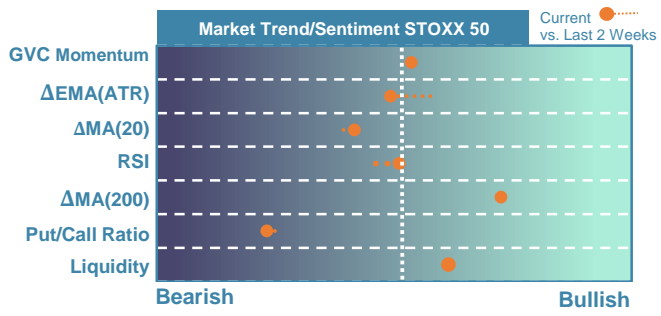
Index's Evolution YTD



MSCI World Sector Evolution YTD

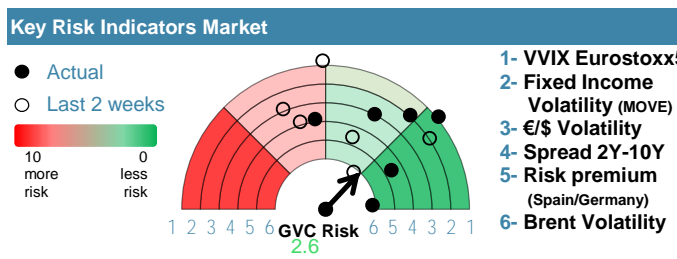


EUROPE



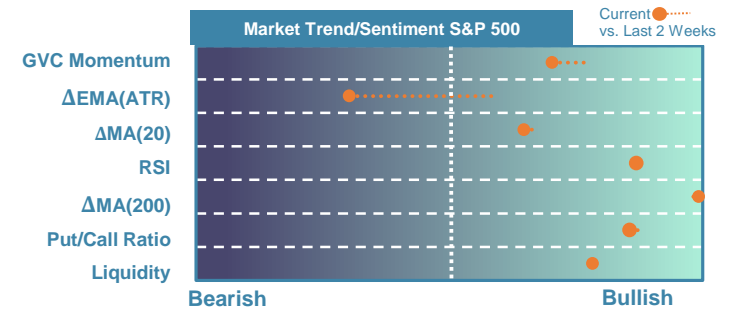
Market Index	Last	Daily Var. 22:00 PM	Future 9:42 AM	Yearly Var.
DJ Eurostoxx 50	4,903.62	-1.33%	0.08%	8.45%
DAX 40	18,236.19	-1.28%	0.07%	8.86%
CAC 40	7,508.66	-1.56%	0.11%	-0.46%
FTSE 100	8,139.81	-0.66%	0.05%	5.26%
IBEX 35	10,898.80	-1.12%	-0.06%	7.89%

Fixed Income	Last	Daily Var.	Bip Var.	Yearly Var.
Bond Spain 10Y	3.38	-2.17%	-7.50	12.53%
Bond Germany 10Y	2.56	-1.92%	-5.00	26.02%
Bond U.K. 10Y	4.17	-1.86%	-7.90	17.89%
H.Yield ICE BofA	6.39	0.05%	-	-1.57%



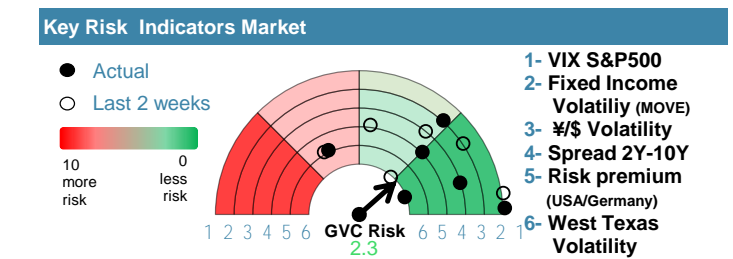
Commodities	Last	Daily Var.	Yearly Var.
Brent Oil	87.34	1.28%	13.37%
Gold	2,363.24	1.48%	14.42%
CRB Index	345.23	0.59%	14.54%
Copper (USD/LBS)	4.53	2.59%	16.53%

EEUU & ASIA



Market Index	Last	Daily Var. 22:00 PM	Future 9:42 AM	Yearly Var.
DJ Industrial	39,291.97	-0.13%	-0.11%	4.25%
S&P 500	5,576.98	0.07%	-0.08%	16.92%
Nasdaq 100	20,453.02	0.07%	-0.09%	21.56%
Nikkei 225	41,580.17	1.96%	0.00%	24.25%
Shanghai 30	2,959.37	1.26%	2.05%	-0.52%

Fixed Income	Last	Daily Var.	Bip Var.	Yearly Var.
Bond EEUU 10Y	4.35	-1.91%	-8.47	12.44%
Bond Japan 10Y	1.10	-0.81%	-0.90	75.68%
Bond China 10Y	2.24	0.04%	0.10	-13.03%
H.Yield ICE BofA	7.52	0.58%	-	2.42%



Currency	Last	Daily Var.	Yearly Var.
€/\$	1.08	0.39%	-2.26%
¥/\$	161.60	0.10%	14.62%
£/€	0.85	-0.09%	-2.30%
B/\$	60,194.98	-3.00%	43.29%

Region/ Event	Relevance	Period	Previous	Forecast	Actual	Impact
Initial Jobless	★★★★	W 06 Jul	238000	236500	-	-
CPI Final (Y.Y)	★★★★	Jun 2024	2.20%	2.20%	2.2	-
HICP Final (Y.Y)	★★★★	Jun 2024	2.50%	2.50%	2.5	-
Industrial Output (M.M)	★★★	May 2024	-0.90%	0.22%	0.2	Medium
Goods Trade Balance	★★★	May 2024	-19607M	-16042M	-17.917	Low
Manufacturing Output	★★★★	May 2024	-1.40%	0.52%	0.4	Medium
CPI (f.) (Y.Y)	★★★★	Jun 2024	3.30%	3.10%	-	-
Core CPI (Y.Y)	★★★★	Jun 2024	3.40%	3.41%	-	-